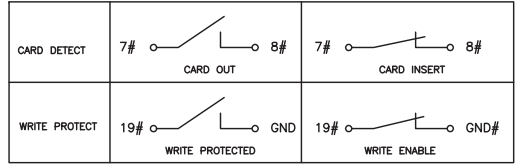
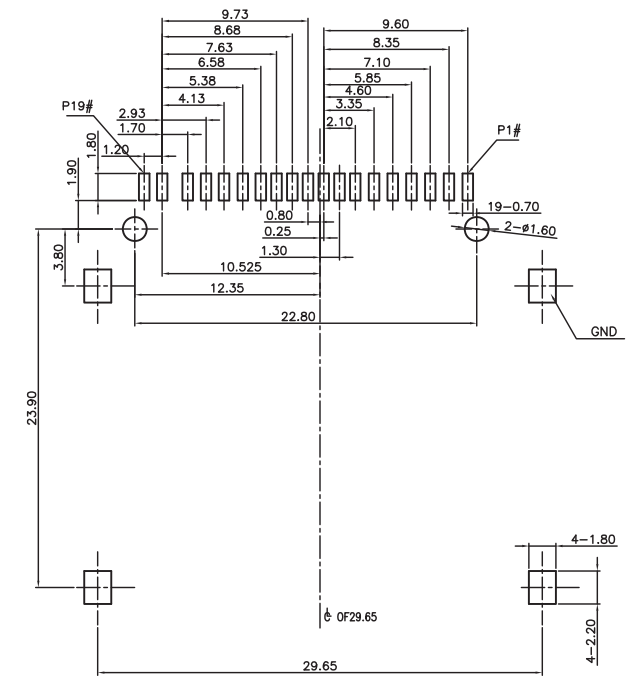
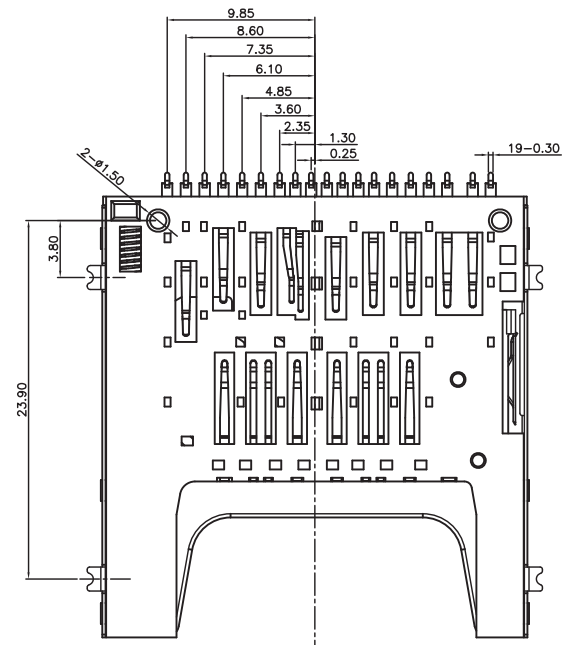
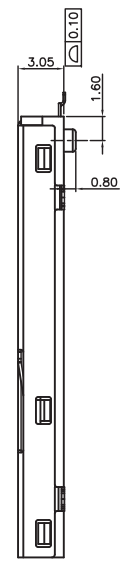
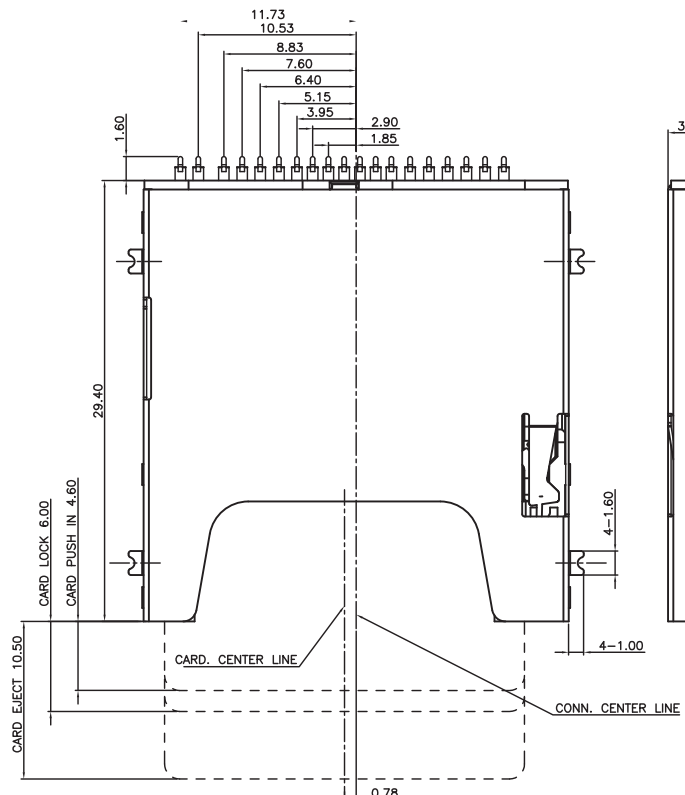




REV.	ECN.NO.	MODIFY.CONTENT	DATE
B	EN1501016	塑胶外观与实物相符	2015.01.16



PIN DEFINE:

PIN#	NAME	DESCRIPTION	PIN#	NAME	DESCRIPTION
1	VSS3	GROUND	11	VDD1	SUPPLY VOLTAGE
2	DAT2	DATA LINE BIT2	12	D1-	DIFFERENTIAL DATE 1-
3	D0+	DIFFERENTIAL DATE 0+	13	CLK	CLOCK
4	CD/DAT3	CARD DETECT/DATA LINE BIT3	14	D1+	DIFFERENTIAL DATE 1+
5	D0-	DIFFERENTIAL DATE 0-	15	VSS2	SUPPLY VOLTAGE GROUND
6	CMD	COMMAND/RESPONSE	16	VSS5	GROUND
7	CD	CARD DETECT	17	DAT0	DATA LINE BIT0
8	VSS1	SUPPLY VOLTAGE GROUND	18	DAT1	DATA LINE BIT1
9	VSS4	GROUND	19	WP	WRITE PROTECT
10	VDD2	SUPPLY VOLTAGE(1.8V)			

RECOMMENDER PCB LAYOUT  
TOLERANCE UNLESS OTHERWISE IS ±0.05

SPECIFICATION

- Material:
  - Insulator: LCP, rated UL94V-0,color:black.
  - Contacts; Phosphor Bronze, Tin 100u"MIN at Solder Tail, Selected Gold on Contact Area Plating.
  - Shell: Stainless.
  - Gold at Solder Tail, Over Nickel Plating.
- Electrical Characteristics:
  - Operating voltage : 500V(AC/DC).
  - Current rating : 1.0 A.
  - Operating Temperature: -20°C~+60°C.
  - Insulation resistance: 1000M ohms min. at 250VDC
  - Dielectric withstanding voltage:500 VAC/1minute.
  - Contact resistance: 100m ohms max.
  - Mating cycle: 10000 cycles, spring is not breaking.

P/N: 102000041110000

- Card Product
- Order number
- 11:gold flash
- 12:gold 3u"MIN
- 14:gold 10u"MIN
- 15:gold 15u"MIN
- Tray packing

GENERAL TOLERANCE	DWG.NO.	PART.NO.	DRAWN	MATERIAL	SCALE
X.±0.35	REV.	TITLE	CHECKED	DATE	UNITS
.X±0.30	SIZE	SHEET	APPROVED	东莞市涪程电子科技有限公司	
.XX±0.25	A4				MM