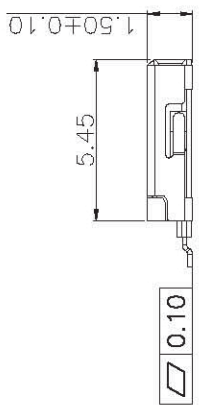
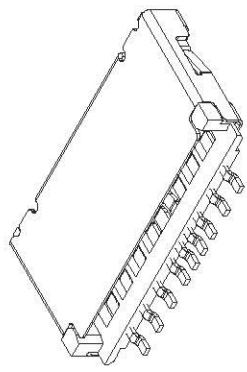
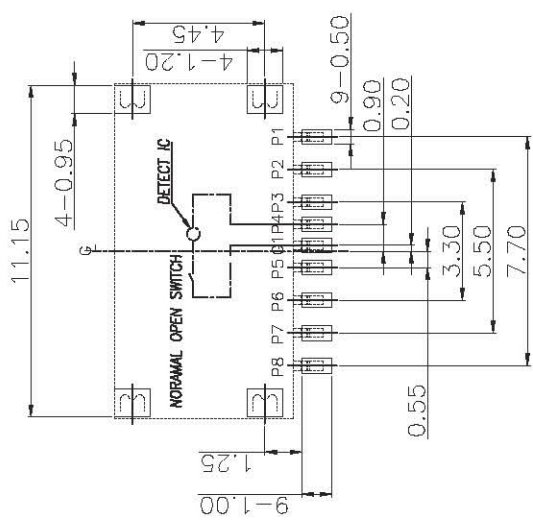


REV.	ECN NO.	MODIFY CONTENT	DATE
A		NEW	2011/10/31
B			2014/03/28

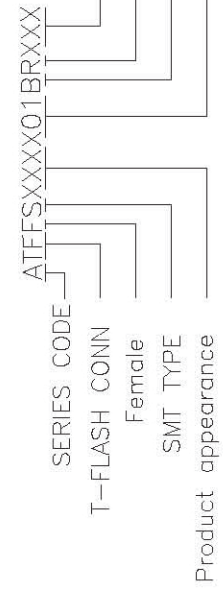


RECOMMENDED PCB LAYOUT  
TOL:(±0.05)

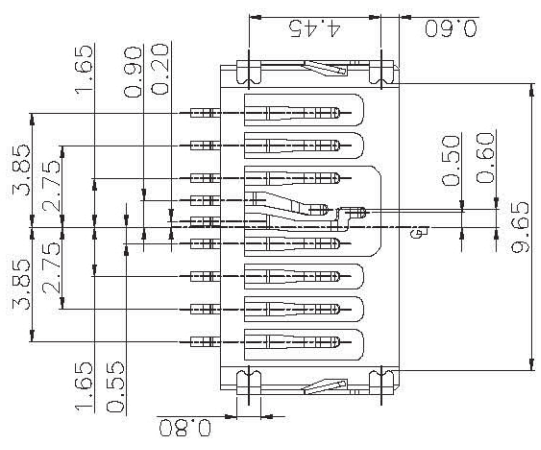
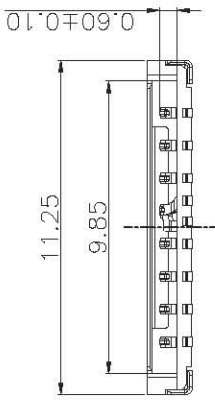
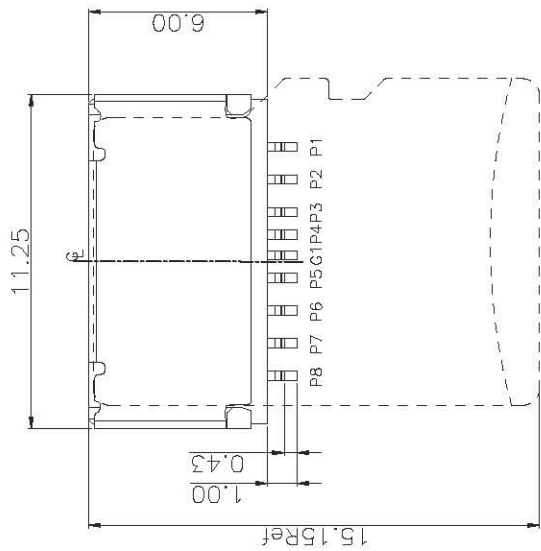
NOTES:

- MATERIAL:  
HOUSING:THERMOPLASTIC,UL 94V-0,30%G/F FILLED;  
COLOR:BLACK  
CONTACT:PHOSPHOR BRONZE T=0.15mm  
SHIELDED:STAINLESS STEEL T=0.15mm

PART NUMBER INFORMATION :



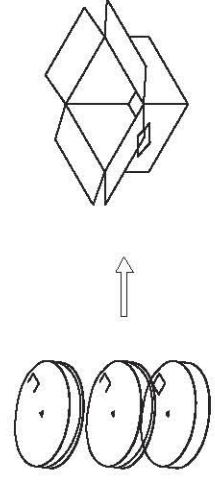
P8	DAT1	PIN NUMBER	PIN NUMBER
P7	DAT0		
P6	VSS		
P5	CLK		
G1	SWITCH		
P4	VDD		
P3	CMD		
P2	CD/DAT3		
P1	DAT2		



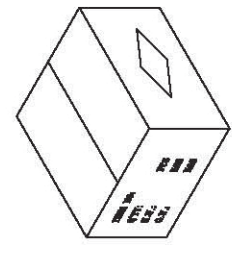
GENERAL TOLERANCE		DWG NO.	'A0713-001	APPD:	WIND	Scale	1:1
X.±0.45	.X.±1'	Title	T-FLASH 9PIN 1.5H CONN (SIMPLE SWITCH TYPE)	CHKD:		UNIT	MM
.X.±0.35	.X.±2'	Part No.	ATFFS150A01BR016	DR:	Date		2013/07/13
.XX±0.25	.XX±1"						
.XXX±0.15	.XXX±0.5"						
SHEET	1/1						

东莞市浔程电子科技有限公司

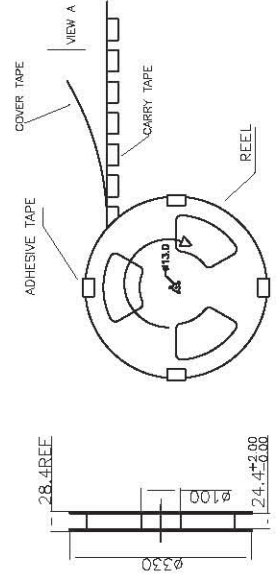
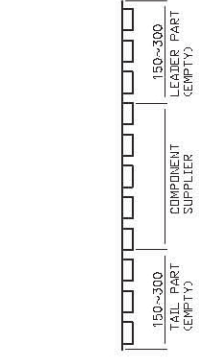
REV.	ECN NO.	MODIFY CONTENT	DATE
A		NEW	2012/04/13



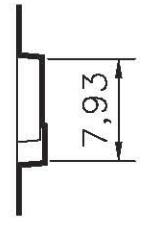
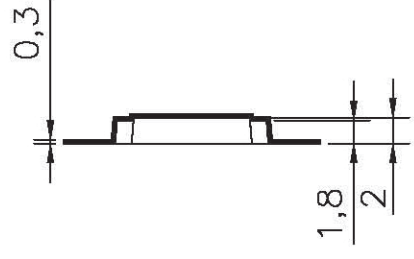
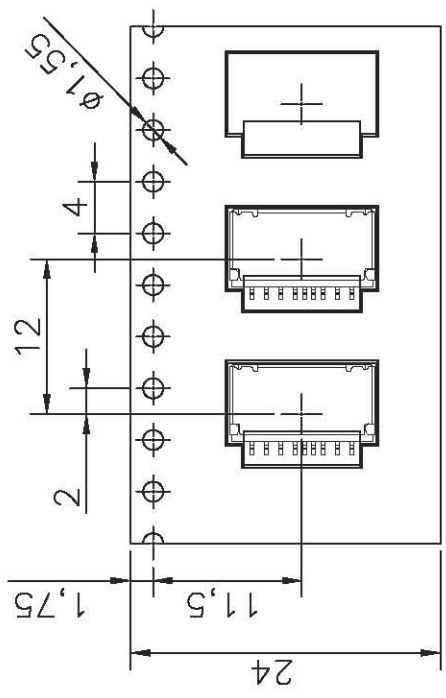
每箱装12盘,依次叠在一起(图一)



封箱,填写相关内容(图二)



对应三视图



NOTE:

1. CARRY TAPE(黑色)前部分与尾部分各留出150~300mm长度不装产品
2. 每穴放置1PCS产品,放置方式如图示
3. 包装机包好后,在REEL的个等分点上贴上胶带,以防止REEL张开,每REEL贴1PCS标签
4. 包装数量:2500PCS/REEL, 12REEL/CARTON, 30000PCS/CARTON
5. 依次将产品放入箱内,共放12盘(图一)
6. 封箱,在封好的纸箱上按客户要求写上料号,数量等(图二)
7. 顺向出料,单孔朝外。

GENERAL TOLERANCE	DWG NO.	A0417-001	APPD:	WIND	Scale	1:1
X.±0.45	X.±5°	T-TITLE	CHKD:	UNIT	mm	
.X±0.35	.X±2°	Package	DR:	Date	2014/04/17	
.XX±0.25	.XX±1°	Part NO.				
.XXX±0.15	.XXX±0.5°					
SHEET 1/1						

东莞市浔程电子科技有限公司