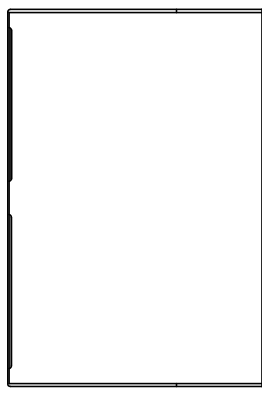
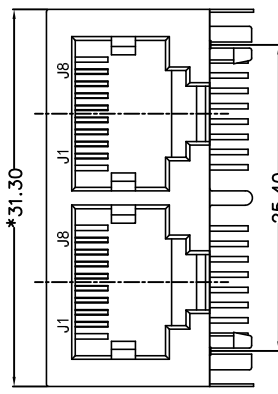


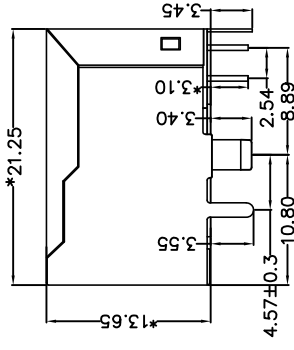
1	2	3	4	5	6	7	8
REACH & RoHS COMPLIANT							
REV.	ECN / DESCRIPTION	BY	DATE				
A0	NEW	MQ.Qu	2018.05.31				



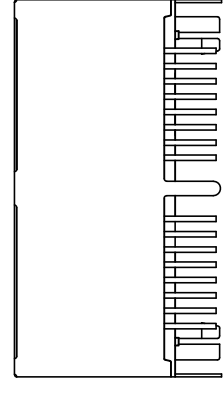
TOP VIEW



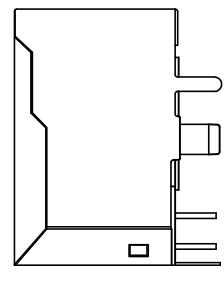
FRONT VIEW



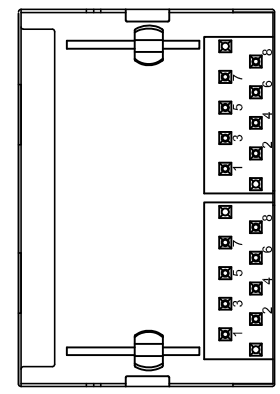
RIGHT SIDE VIEW



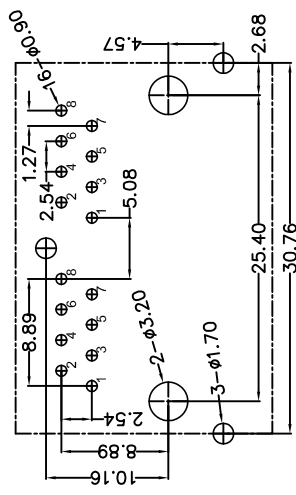
BACK VIEW



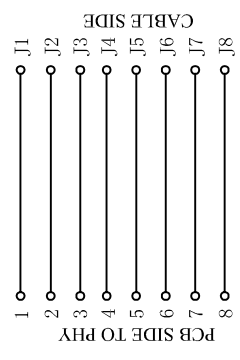
LEFT SIDE VIEW



BOTTOM VIEW



RECOMMENDED PCB LAYOUT
VIEWED FROM COMPONENT SIDE



MATERIAL:
HOUSING: PA46, UL94V-0, BLACK.
TERMINAL: PHOSPHOR BRONZE $\phi=0.46\text{MM}$, 0.60° GOLD PLATING.
SHIELD: C2680, $1=0.20\text{MM}$, $20\sim50\mu\text{m}$ MIN NICKEL PLATING ON ALL AREA.

MECHANICAL:
DURABILITY: 750 CYCLES MIN, 12.5MM/MINUTE.
INSERTION FORCE: 2.2KG.F MAX.
RETENTION STRENGTH: 7.7KG.F BETWEEN JACK AND PLUG.
OPERATING TEMPERATURE: $-40^\circ\text{C}\sim+85^\circ\text{C}$.
STORAGE TEMPERATURE: $-40^\circ\text{C}\sim+85^\circ\text{C}$.
ALL CRITICAL DIMENSIONS WITH $^{+0.05}$.

ELECTRICAL:
VOLTAGE: 125 VOLTS AC.
CURRENT RATING: 1.5AMP.
DIELECTRIC STRENGTH: 1000 VAC RMS 50HZ OR 60HZ, 1 MIN.
INSULATION RESISTANCE: 500 MEGA OHMS MIN. INITIAL AFTER 500V DC FOR 1 MINUTE.
CONTACT RESISTANCE: SINGLE TERMINAL 30 MILLIOHMS MAX. INITIAL 50 MILLIOHMS MAX. AFTER DURABILITY TEST.

TITLE: RJ45 5921 1*2		SIZE A4	UNITS MM[INCH]	GENERAL TOLERANCES UNLESS SPECIFIED	APPROVED BY: JP.Gong
PART NO.: FC-5921S12NL		SACLE 1:1	REV A0	$x\pm 0.35$ $.x\pm 0.30$	CHECKED BY: TW.Xu
REMARK:		SHEET 1/1		$.xx\pm 1.5^\circ$ $.xxx\pm 1.0^\circ$	DESIGNED BY: MQ.Qu

东莞市浚程电子科技有限公司
DONG GUAN FU CHENG ELECTRONIC TECHNOLOGY Co., LTD