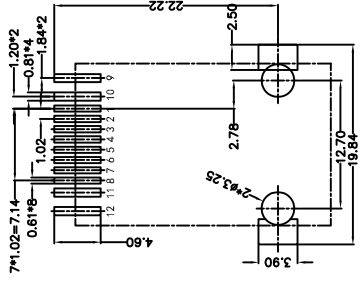
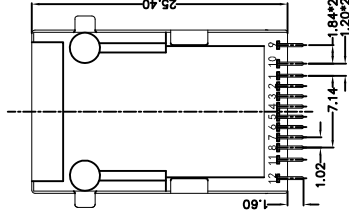
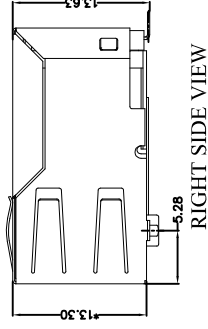
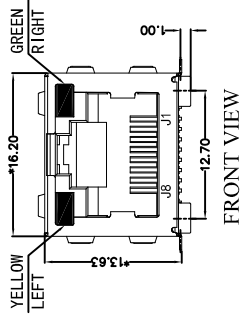
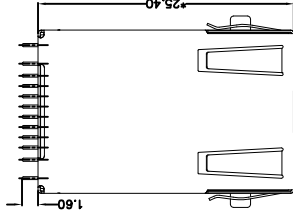


REACH & RoHS
COMPLIANT



MATERIAL:

HOUSING: LCP,UL94V-0,BLACK.
 TERMINALS BRACKET: LCP,UL94V-0,BLACK.
 SHIELD: C2680,T=0.20MM,NICKEL PLATING ON ALL AREA.
 TERMINAL: PHOSPHOR BRONZE C5210,T=0.35MM,
 6U" GOLD PLATING ON CONTACT AREA.

MECHANICAL:

DURABILITY: 750 CYCLES MIN.
 MATING FORCE: 23N MAX.
 OPERATING TEMPERATURE: -40°C~+85°C.
 STORAGE TEMPERATURE: -40°C~+85°C.
 ALL CRITICAL DIMENSIONS WITH "※"

REV.	ECN / DESCRIPTION	BY	DATE
A0	NEW	TW.Xu	2018.10.30

TITLE:	SIZE	UNITS	GENERAL TOLERANCES UNLESS SPECIFIED	APPROVED BY:
TAB-UP IX1 100BASE 贴片	A4	MM[INCH]	UNLESS SPECIFIED	JP.Gong
PART NO.:	SACLE	REV	X ^o ±3.0°	CHECKED BY:
FC-SM002YGLNL	1:1	A0	.X ^o ±2.0°	TW.Xu
REMARK:	SHEET		.XX ^o ±1.5°	DESIGN BY:
	1/3		.XXX ^o ±1.0°	TW.Xu

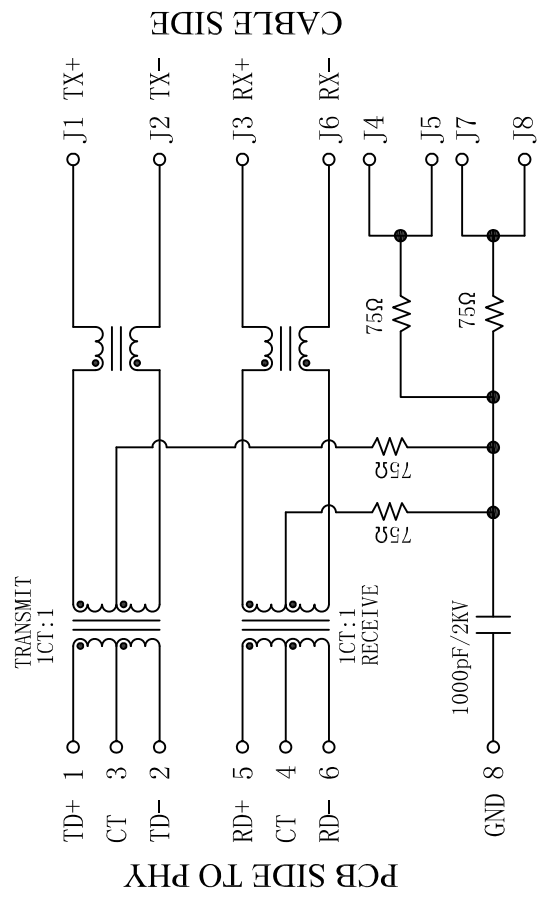
东莞市浚程电子科技有限公司, LTD
 DONG GUAN FU CHENG ELECTRONIC TECHNOLOGY Co., LTD

REV.	ECN / DESCRIPTION	BY	DATE
A0	NEW	TW.Xu	2018.10.30

REACH & RoHS COMPLIANT

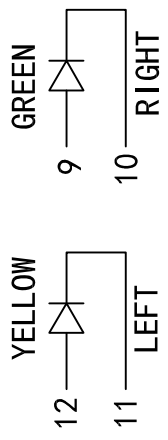
Electrical:

- Turn ratio: 1~2: J1~J2=1CT:1CT(±2%).
5~6: J3~J6=1CT:1CT(±2%).
- OCL: 350uH Min.at 100KHz 100mV 8mA DC.
- Insertion Loss: -1.0 dB Max 1~100MHz.
- Return loss: -20dB Min 1~10MHz;
-16dB Min 10~30MHz.
-12dB Min 30~60MHz.
-10dB Min 60~80MHz.
- Cross talk: -40dB Min 1~30MHz;
-35dB Min 30~60MHz;
-30dB Min 60~100MHz;
- CMR: -35dB Min 1~100MHz;
- Hi-Pot: 1500V AC & 2250V DC
6S 1mA PRI TO SEC



LED Specification

Standard LED Color	LED Wavelength	Forward(A)	Forward(V)
Green	568nm	20mA	1.85-2.45V
Yellow	585nm	20mA	1.7-2.2V



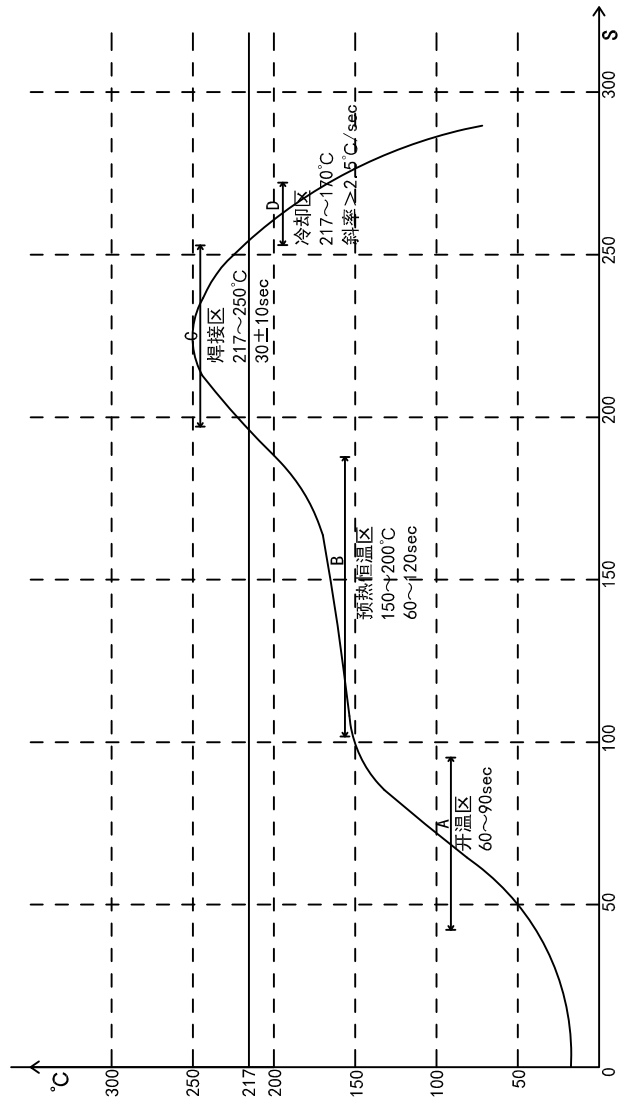
TITLE: TAB-UP IX1 100BASE 贴片 PART NO: FC-SM002YGLNL REMARK:	SIZE A4	UNITS MM[INCH]	GENERAL TOLERANCES UNLESS SPECIFIED	APPROVED BY: JP.Gong
	SACLE 1:1	REV A0	x°±0.35 .x°±2.0°	CHECKED BY: TW.Xu
	SHEET 2/3		.xx°±1.5° .xxx°±1.0°	DESIGN BY: TW.Xu

东莞市浚程电子科技有限公司
DONG GUAN FU CHENG ELECTRONIC TECHNOLOGY Co., LTD

REACH & RoHS COMPLIANT

REV.	ECN / DESCRIPTION	BY	DATE
A0	NEW	TW.Xu	2018.10.30

PROFILE OF REFLOW SOLDERING



- A. Temperature range of open
- B. Preheat temperature zone
- C. The welding zone
- D. The cooling zone
- E. Tip temperature: 265±5°C.
- F. Tip temperature time: 30±10Sec.
- G. Tip melting point of Sn96.5/Ag3/Cu0.5.

TITLE:		SIZE	UNITS	GENERAL TOLERANCES UNLESS SPECIFIED	APPROVED BY:
TAB-UP IX1 100BASE 贴片		A4	MM[INCH]		JP.Gong
PART NO.:		SACLE	REV	x±0.35	CHECKED BY:
FC-SM002YGLNL		1:1	A0	.x±0.30	TW.Xu
REMARK:		SHEET		.xx±0.25	DESIGN BY:
		3/3		.xxx±0.10	TW.Xu

东莞市浔程电子科技有限公司
DONG GUAN FU CHENG ELECTRONIC TECHNOLOGY Co., LTD