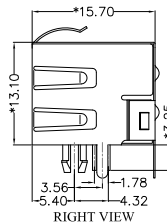
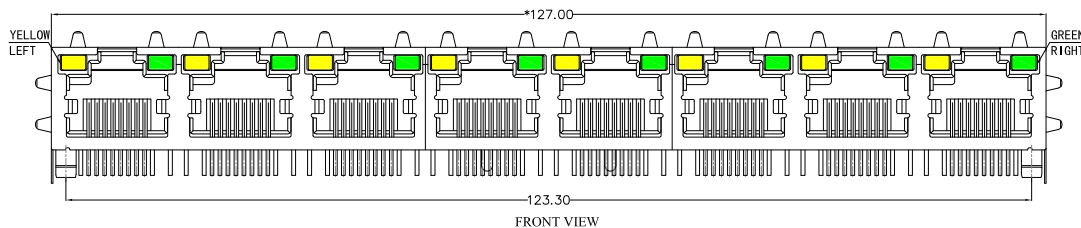


REACH & RoHS
COMPLIANT

REV.	ECN / DESCRIPTION	BY	DATE
A0	NEW	MQ.QU	2018.06.07



MATERIAL:

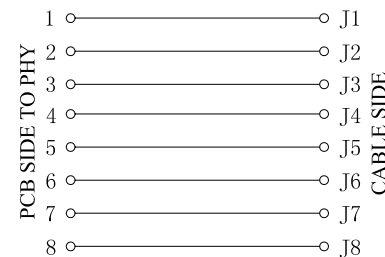
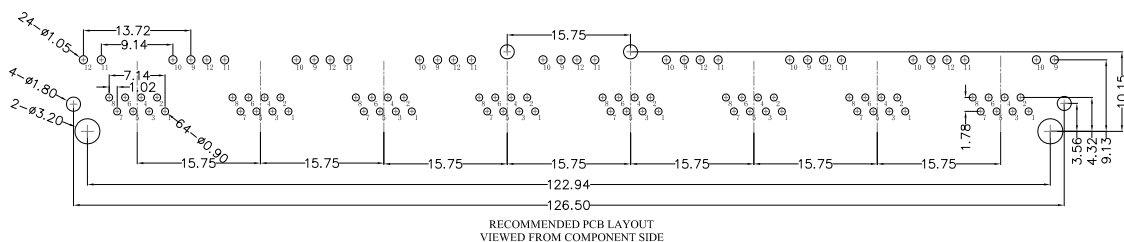
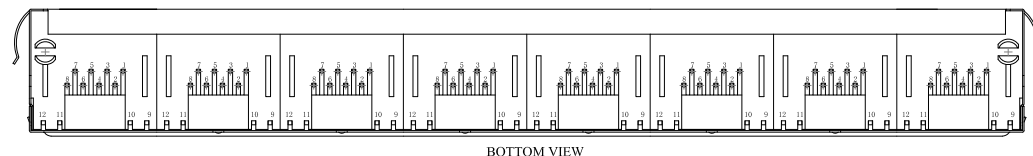
HOUSING: PBT,UL94V-0,BLACK.
TERMINAL: PHOSPHOR BRONZE $\phi=0.46\text{MM}$, 0.6U" GOLD PLATING.
SHIELD: C2680,T=0.20MM,20 MIN NICKEL PLATING ON ALL AREA.

MACHANICAL:

DURABILITY: 750 CYCLES MIN,12.5MM/MINUTE.
INSERTION FORCE: 2.2KG.F MAX.
RETENTION STRENGTH : 7.7KG.F BETWEEN JACK AND PLUG.
OPERATING TEMPERATURE: -40°C~+85°C.
STORAGE TEMPERATURE: -40°C~+85°C.
ALL CRITICAL DIMENSIONS WITH "*"

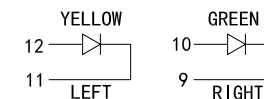
ELECTRICAL:


VOLTAGE: 125 VOLTS AC.
CURRENT RATING : 1.5AMP.
DIELECTRIC STRENGTH: 1000 VAC RMS 50HZ OR 60HZ,1MIN.
INSULATION RESISTANCE: 500 MEGA OHMS MIN. INITIAL AFTER 500V DC FOR 1 MINUTE.
CONTACT RESISTANCE: SINGLE TERMINAL 30 MILLIOHMS MAX. INITIAL 50 MILLIOHMS MAX. AFTER DURABILITY TEST.



LED Specification

Standard LED Color	LED Wavelength	Foward(A)	Foward(V)
Green	568nm	20mA	1.8-2.8V
Yellow	585nm	20mA	1.8-2.8V



 <p>东莞市涪程电子科技有限公司 DONG GUAN FU CHENG ELECTRONIC TECHNOLOGY Co., LTD</p>	<p>TITLE: RJ45直通 56带屏蔽带灯</p>	<p>SIZE A4</p>	<p>UNITS MM[INCH]</p>	<p>GENERAL TOLERANCES UNLESS SPECIFIED</p>		<p>APPROVED BY: JP.Gong</p>
	<p>PART NO.: FCRJ-56S8P8C1X8YGENL</p>	<p>SACLE 1:1</p>	<p>REV A0</p>	<p>$x \pm 0.35$</p> <p>$x^\circ \pm 3.0^\circ$</p>	<p>$.x \pm 0.30$</p> <p>$.x^\circ \pm 2.0^\circ$</p>	<p>CHECKED BY: TW.Xu</p>
	<p>REMARK:</p>	<p>SHEET 1/1</p>		<p>$.xx \pm 0.25$</p> <p>$.xxx \pm 0.10$</p>	<p>$.xx^\circ \pm 1.5^\circ$</p> <p>$.xxx^\circ \pm 1.0^\circ$</p>	<p>DESIGND BY: MQ.Qu</p>