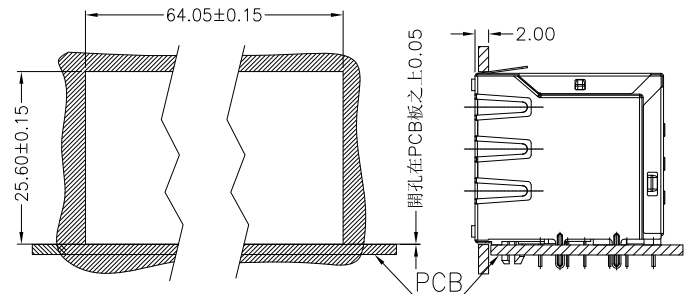
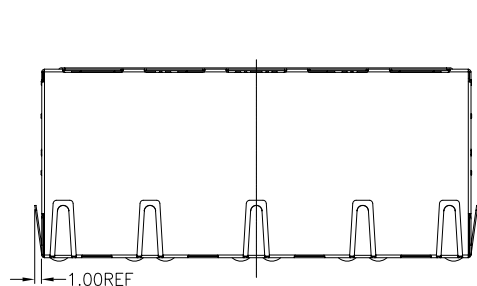
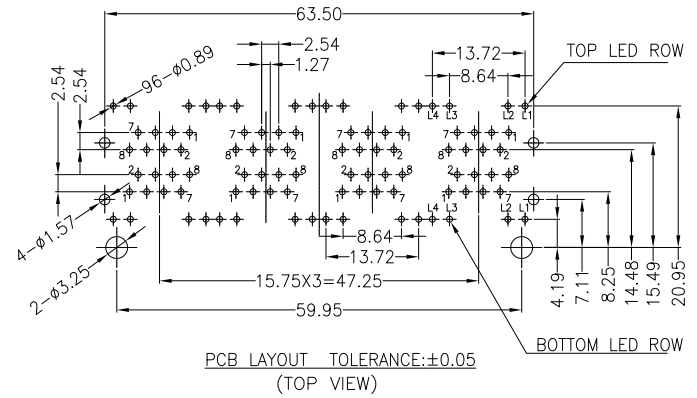


REACH & RoHS
COMPLIANT

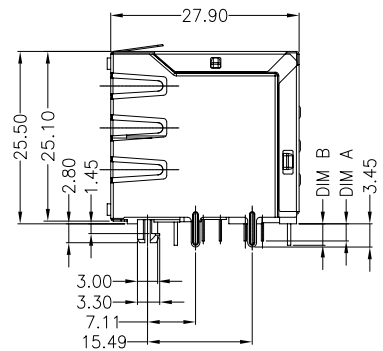
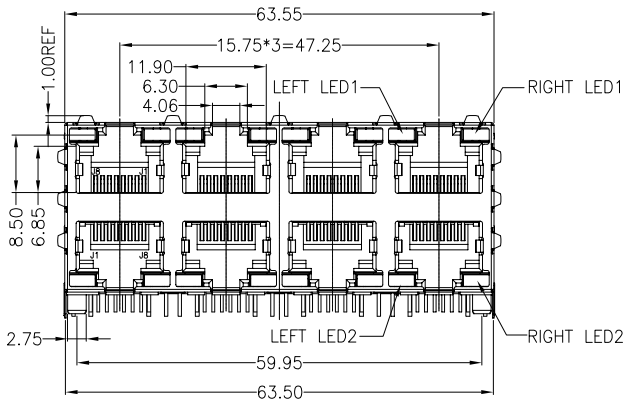
REV.	ECN / DESCRIPTION	BY	DATE
A0	NEW	MQ.QU	2018.05.31



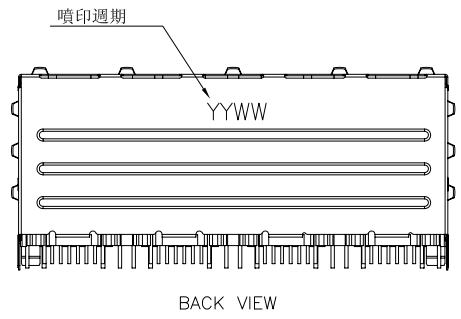
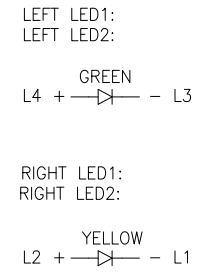
RECOMMENDED
PANEL CUTOUT DIMENSION



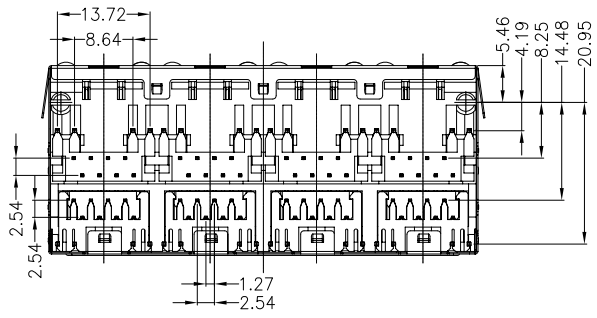
PCB LAYOUT TOLERANCE:±0.05
(TOP VIEW)



LED SCHEMATIC:



BACK VIEW



- NOTES:
 1.MATERIAL:
 HOUSING:HIGH TEMP.THERMOPLASTIC,BLACK,UL 94V-0
 CONTACT:PHOSPHOR BRONZE,T=0.35mm.
 SHELL:BRASS
 2.FINISH:
 CONTACT:50u"MIN. NICKEL UNDERPLATING ALL AREA,
 100u"MIN. TIN ON SOLDERTAILS,
 SELECT GOLD PLATING ON CONTACT AREA.
 3.OPERATING TEMPERATURE:-40°C~+85°C.
 4.JACK CAVITY CONFORMS TO FCC RULES AND
 REGULATIONS PART 68, SUBPART F

P/N RULE:
 JM4-C D 1 4-2 1 0 Y
 SHELL CODE
 W/ ALL SPRING
 W/O LOGO
 1:HSG PBT
 LED CODE
 LEFT LED1: GREEN
 LEFT LED2: GREEN
 RIGHT LED1: YELLOW
 RIGHT LED2: YELLOW
 DIM CODE
 Contact PIN DIM A :2.54
 LED PIN DIM B :3.18
 PLATING CODE
 2-GOLD PLATED 3u"

东莞市涪程电子科技有限公司
DONG GUAN FU CHENG ELECTRONIC TECHNOLOGY Co., LTD

TITLE:	SIZE	UNITS	GENERAL TOLERANCES		APPROVED BY:
RJ45 CONNECTOR JM 2*4 PORT W/ LED, 8P8C, Shielded	A4	MM[INCH]	UNLESS SPECIFIED		JP.Gong
PART NO.:	SACLE	REV	x±0.35	x°±3.0°	CHECKED BY:
FCRJ45-JM4-CD14-210Y	1:1	A0	.x±0.30	.x°±2.0°	TW.Xu
REMARK:	SHEET		.xx±0.25	.xx°±1.5°	DESIGND BY:
	1/1		.xxx±0.10	.xxx°±1.0°	MQ.Qu