

N series RF Coaxial Connector

FEATURES

- Developed according to the US military standard MIL-C-39012, A Small and Medium Power RF Connector with a Threaded Connection Mechanism
- Strong vibration resistance, high reliability, and superior electrical and mechanical performance
- Can be compatible with international N-series connector products
- Widely used for the transmission of radio frequency signals in radio equipment and instruments

TECHNICAL PARAMETER

Temperature: - 65~+125°C

Impedance: 50Ω、75Ω

Frequency: DC~11GHz

VSWR: ≤1.30(Straight)

Insulation resistance: ≥5000MΩ

Dielectric strength: 1500V(rms)

Operating Voltage: 1000V (rms)

Contact resistance: Center contact: ≤1.5mΩ
Outer contact: ≤0.2mΩ

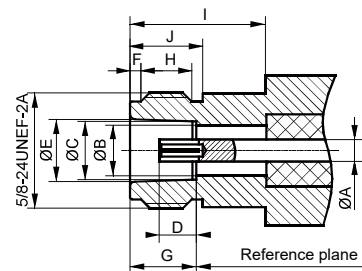
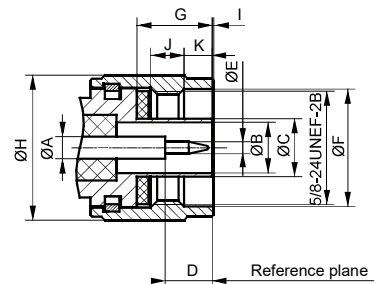
Mechanical endurance: 500 OPS

IMPLEMENTATION CRITERIA

IEC 61169-16 GB/T 11313.16



INTERFACE DIMENSIONS

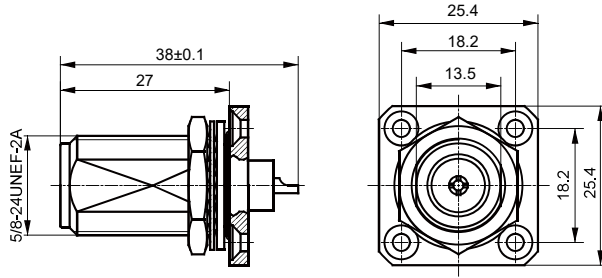
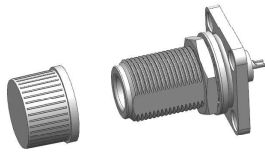


Male connector

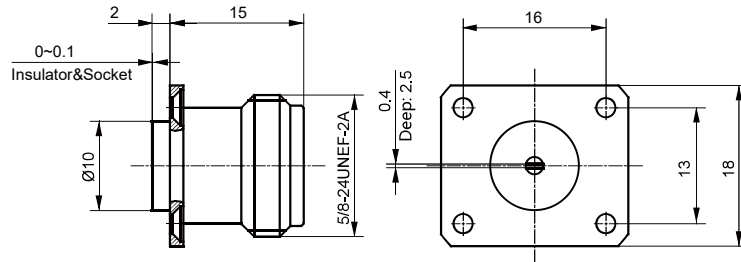
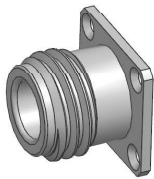
	Min(mm)	Max(mm)
A	3.04 Nominal value	
B	7.00 Nominal value	
C	/	8.027
D	5.28	/
E	1.60	1.676
F	16.00	/
G	9.25	/
H	/	21.00
I	0.41	1.52
J	4.5	/
K	4.013	4.267

Female connector

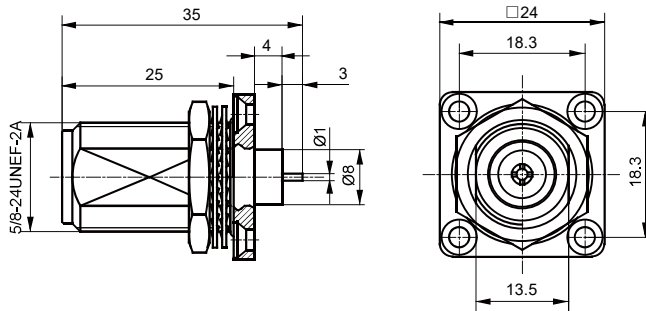
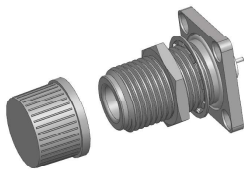
	Min(mm)	Max(mm)
A	3.04 Nominal value	
B	7.00 Nominal value	
C	8.03	8.13
D	4.75	5.26
E	8.53	8.74
F	1.19	1.96
G	9.05	9.19
H	4.37	/
I	10.72	/
J	6.76	/



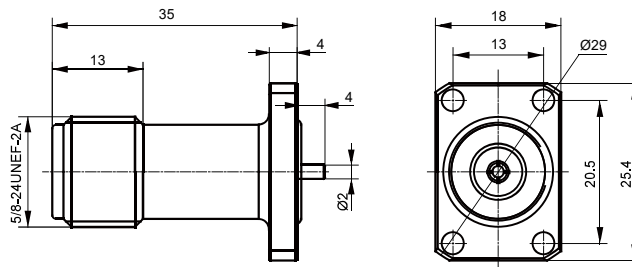
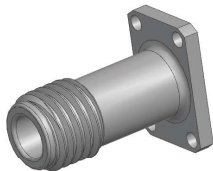
N-KFD-5



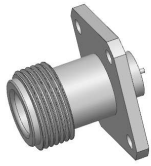
N-KFD-15



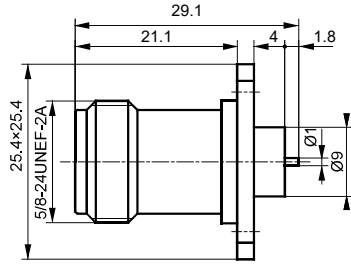
N-KFD-10



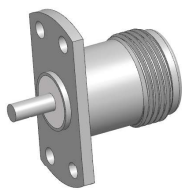
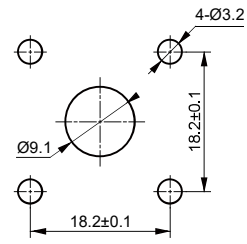
N-KFD-17



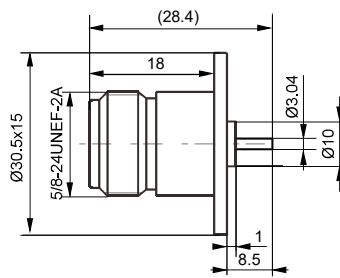
N-KFD-30



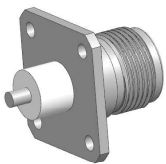
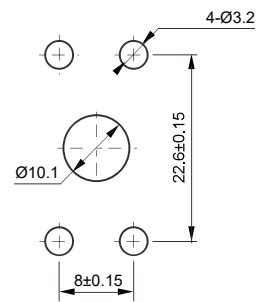
PC BOARD LAYOUT



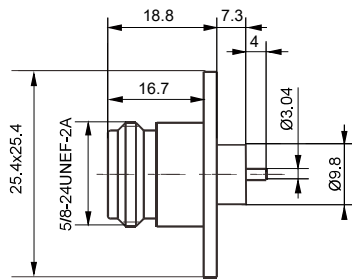
N-KFD-35



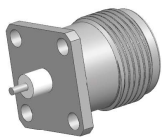
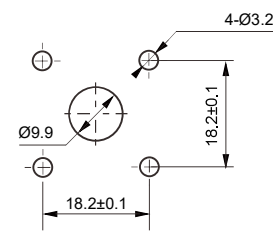
PC BOARD LAYOUT



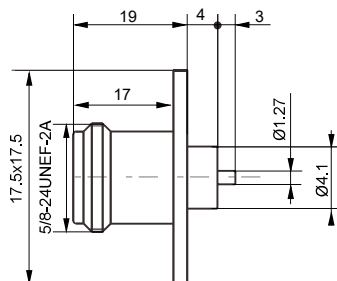
N-KFD-38



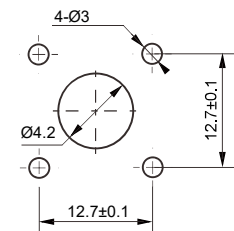
PC BOARD LAYOUT

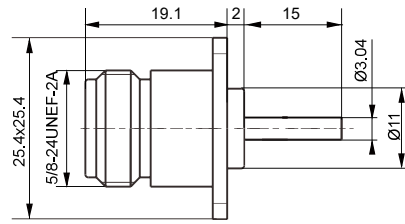
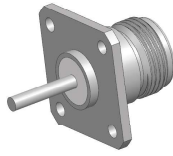


N-KFD-42

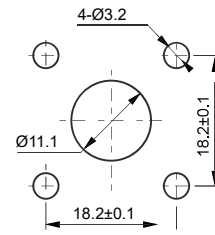


PC BOARD LAYOUT

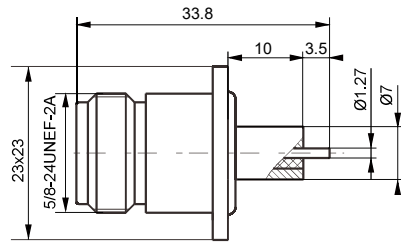
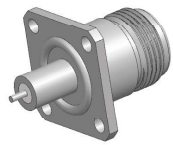




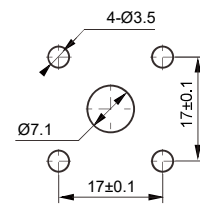
PC BOARD LAYOUT



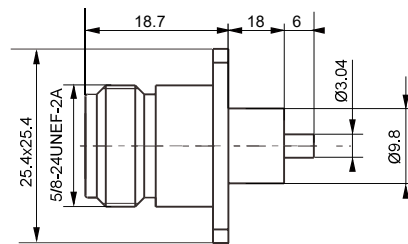
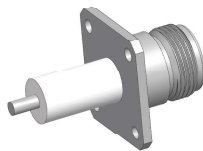
N-KFD-47



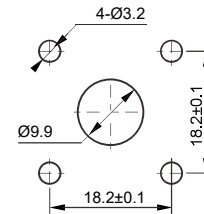
PC BOARD LAYOUT



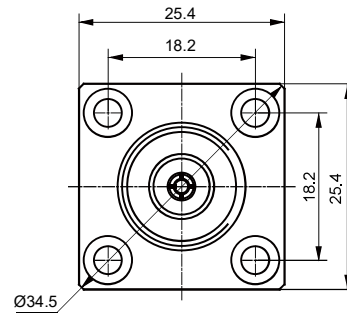
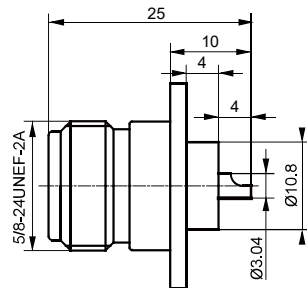
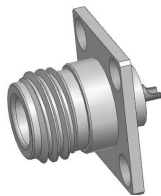
N-KFD-52



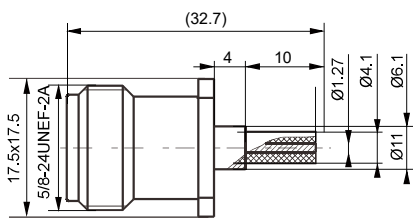
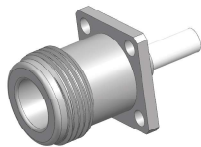
PC BOARD LAYOUT



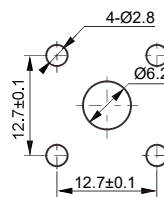
N-KFD-56



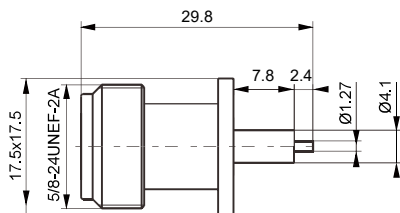
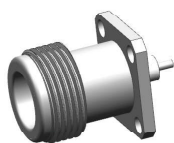
N-KFDG-12



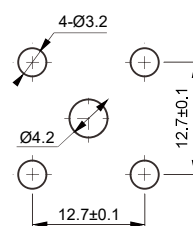
PC BOARD LAYOUT



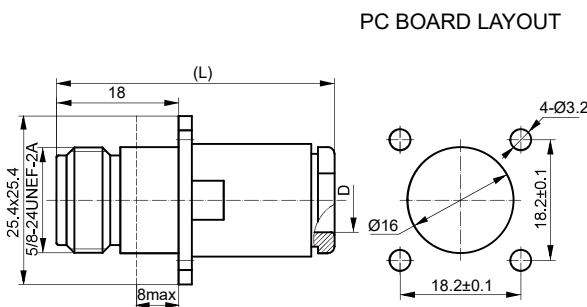
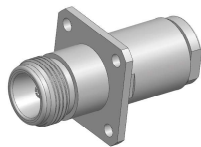
N-KFDG-51



PC BOARD LAYOUT



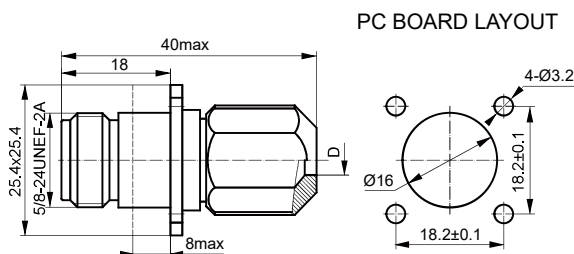
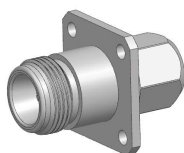
N-KFDG-44



PC BOARD LAYOUT

Type	D	L	Cable
N-KF4A	Ø4.2	43.8	SYV-50-2-2
			SFF-50-2-2
N-KF5	Ø5.3	43.8	SYV-50-3
N-KF7	Ø10.5	43.8	SYV-50-7-1
N-KF8	Ø11.5	43.8	SYV-50-7-2
N-KF12	Ø5.2	43.8	SYV-75-3
N-KF27	Ø7.3	43.8	SYV-50-5-1

N-KF4A



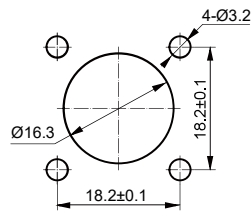
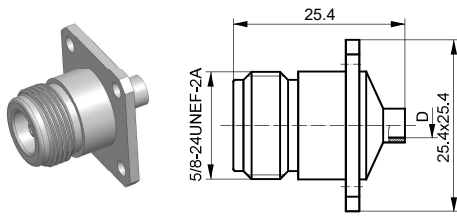
PC BOARD LAYOUT

Type	D	Cable
N-KF3	Ø3	SYV-50-2-1
		SFF-50-1.5-2
N-KF4A	Ø4.2	SYV-50-2-2
		SFF-50-2-2
N-KF5	Ø5.2	SYV-50-3
N-KF7	Ø10.5	SYV-50-7-1
N-KF8	Ø11.5	SFT-50-7-2
N-KF12	Ø5.2	SYV-75-3
N-KF13	Ø7.3	SYV-75-5-1/2
N-KF15	Ø10.5	SYV-75-7
N-KF16	Ø12.8	SYV-75-9
N-KF21	Ø6.5	SDV-4
N-KF27	Ø7.3	SYV-50-5-1
N-KF28	Ø8.1	SYV-50-5-2

N-KF3

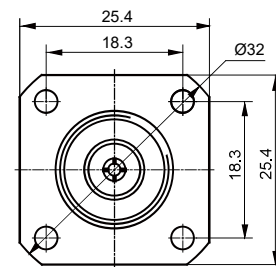
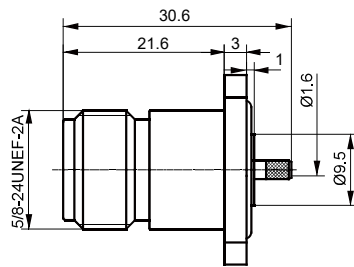
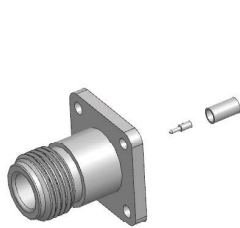


PC BOARD LAYOUT

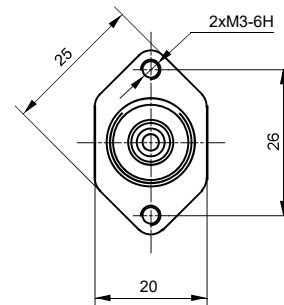
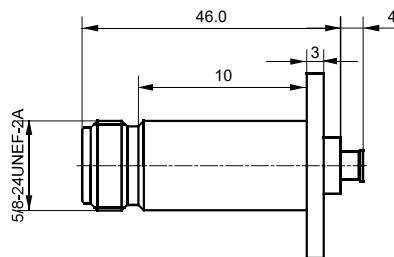


Type	D	Cable
N-KFB2-1	Ø2.2	SFT-50-2-1
N-KFB3-7	Ø3.6	SFT-50-3-1

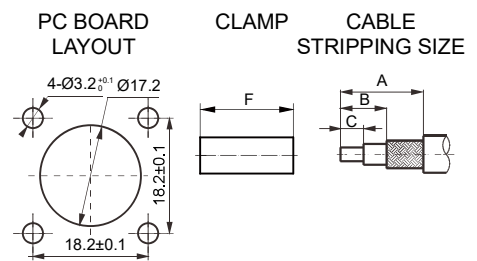
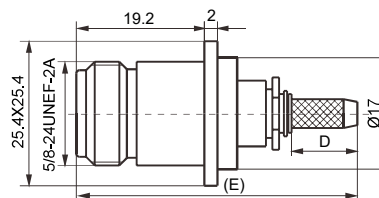
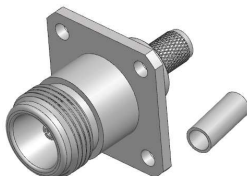
N-KFB2-1



N-KF3Y-1

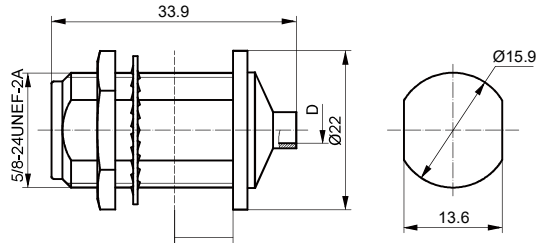
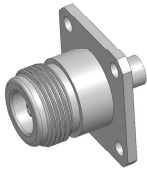


N-KFB3-1



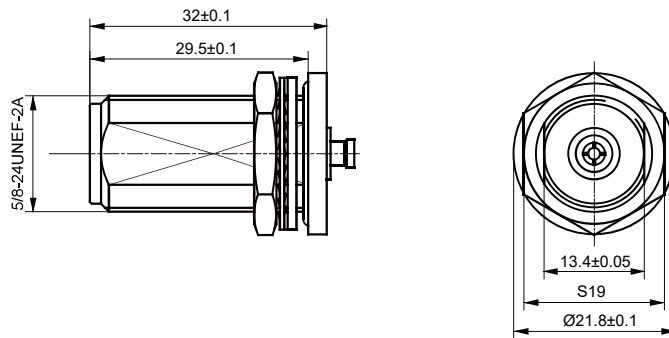
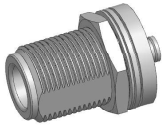
Type	A	B	C	D	E	F	Cable
N-KF4AY	20	10	5	8	36.9	10	SYV-50-2-2
							SFF-50-2-2
N-KF5Y-1	20	10	5	10	36.9	12	SYV-50-3
N-KF12Y	20	10	5	10	36.9	12	SYV-75-3

N-KF4AY

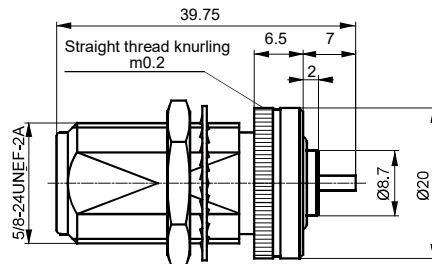


Type	D	A	Cable
N-KYB2-1	Ø2.2	5	SFT-50-2-1
N-KYB3-4	Ø3.6	4	SFT-50-3-1

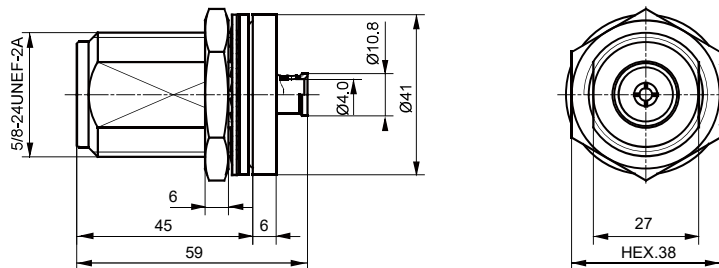
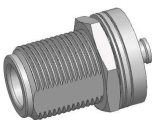
N-KYB2-1



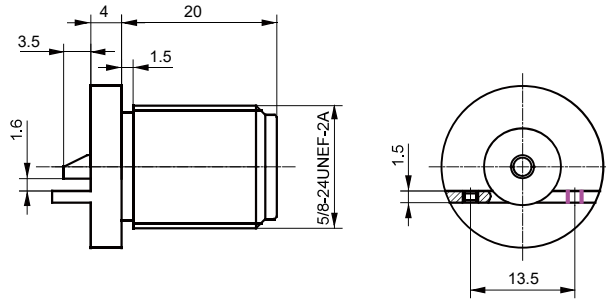
N-KYB2



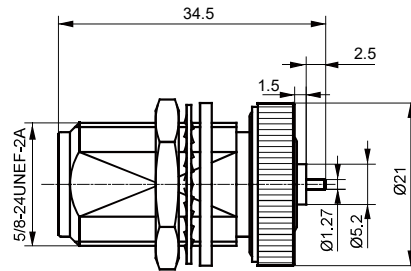
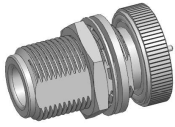
N-KYPD



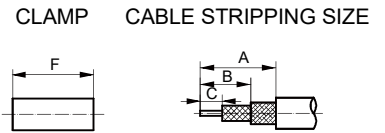
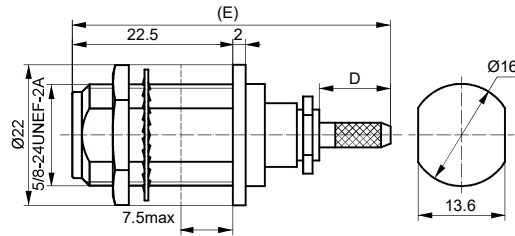
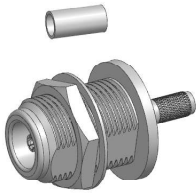
N-KYB3



N-KHD

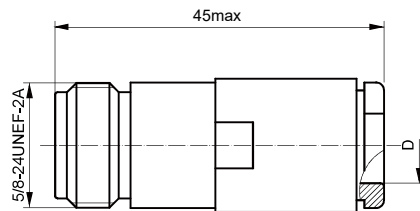


N-KYPD-1

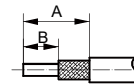


N-KY3Y-1

Type	A	B	C	D	E	F	Cable
N-KY3Y-1	20	10	5	5.4	37.8	6.5	SYV-50-2-1
N-KY4AY-1	20	10	5	8	40.8	10.	SYV-50-2-2 SFF-50-2-2
N-KY5Y	20	10	5	10	42.8	12	SYV-50-3

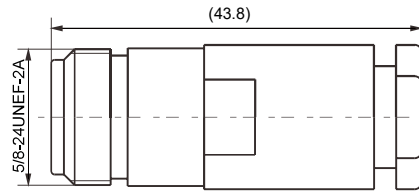


CABLE STRIPPING SIZE



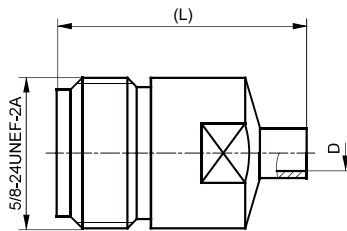
N-K4A

Type	D	A	Cable
N-K4A	Ø4.2	5	SYV-50-2-2 SFF-50-2-2
N-K5	Ø5.2	5	SYV-50-3
N-K7	Ø10.5	5	SYV-50-7-1
N-K28	Ø8.1	5	SYV-50-5-2
N-K8	Ø11.5	5	SYV-50-7-2

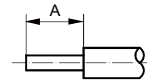


Cable:SUJ50-5-5

N-K302

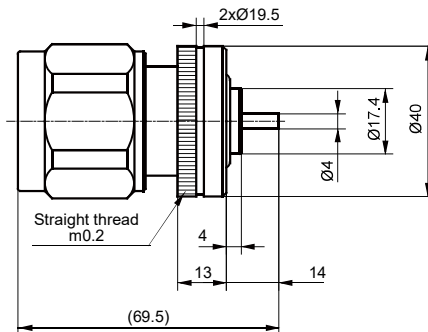
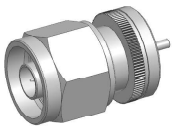


CABLE STRIPPING SIZE

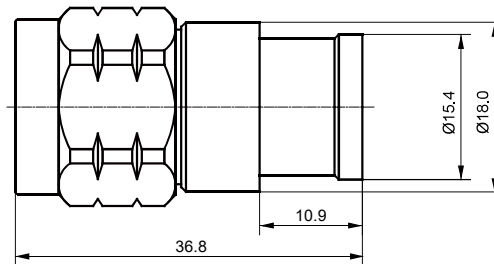
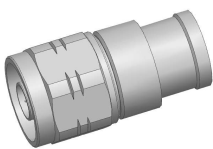


Type	D	A	L	Cable
N-KB2	Ø2.2	5	25.4	SFT-50-2-1
N-KB3-2	Ø3.6	4	27	SFT-50-3-1

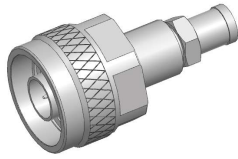
N-KB2



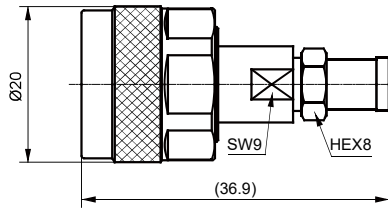
N-JPD



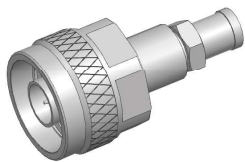
N-J533



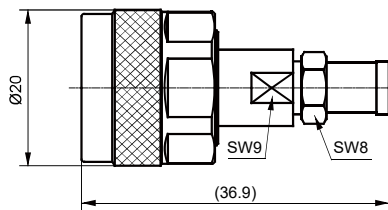
N-J141G-1



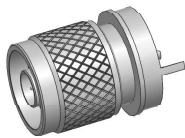
Type	Cable	Notes
N-J141G	CLL50141 or equivalent cable	Stainless steel



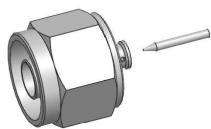
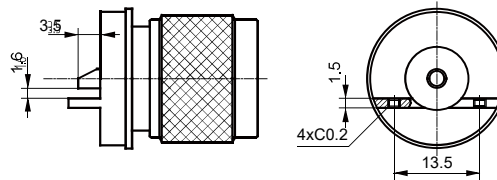
N-J5AG



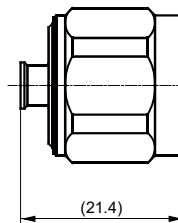
Type	Cable	Notes
N-J5AG	RG142 or equivalent cable	Stainless steel



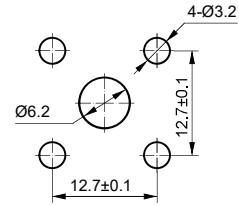
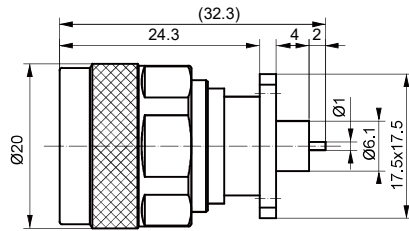
N-JHD



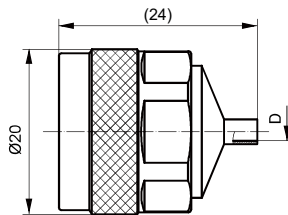
N-JB3-2



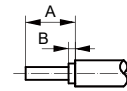
Type	Cable	Notes
N-JB3-2	RG402 or equivalent cable	/



N-JFD-8

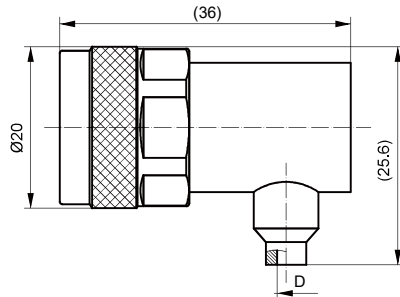


CABLE STRIPPING SIZE

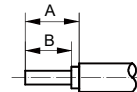


Type	D	A	B	Cable
N-JB2	Ø2.2	4	1	SFT-50-2-1
N-JB3-3	Ø3.6	3.6	0	SFT-50-3-1
N-JB5	Ø6.1	5	0	SFT-50-5.2
N-JB401	Ø6.5	4.5	0	RG401

N-JB2

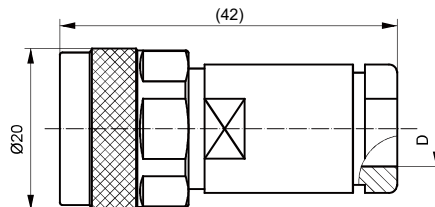


CABLE STRIPPING SIZE

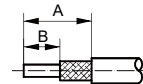


Type	D	A	B	Cable
N-JWB2	Ø2.2	7.2	4.7	SFT-50-2-1
N-JWB3-1	Ø3.6	7.2	4.7	SFT-50-3-1

N-JWB2



CABLE STRIPPING SIZE



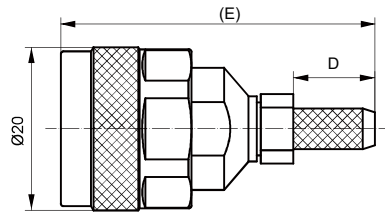
Type	D	A	B	Cable
N-J4A	Ø4.2	10	5	SYV-50-2-2
				SFF-50-2-2
N-J5	Ø5.3	10	5	SYV-50-3
N-J7	Ø10.5	10	5	SYV-50-7-1
N-J8	Ø11.5	10	5	SYV-50-7-2
N-J12	Ø5.2	10	5	SYV-75-3
N-J27	Ø7.4	10	5	SYV-50-5-1
N-J28	Ø8.2	10	5	SYV-50-5-2

N-J4A

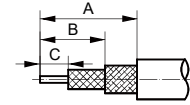




N-J3Y



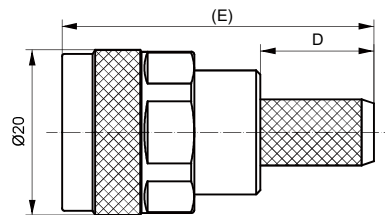
CABLE STRIPPING SIZE



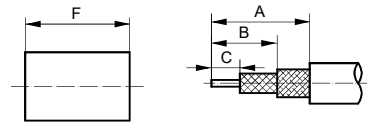
Type	A	B	C	D	E	F	Cable
N-J3Y	20	10	5	5.4	32.3	6.5	SFF-50-1.5-2
N-J4AY	20	10	5	8	34.5	10	SFF-50-2-2
							SYV-50-2-2
N-J5Y-1	20	10	5	10	36.5	15	SYV-50-3



N-J7Y



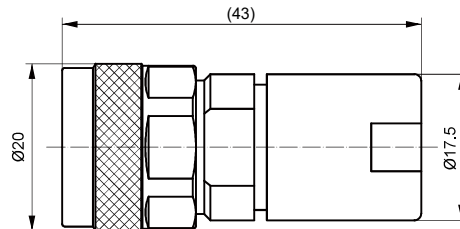
CLAMP CABLE STRIPPING SIZE



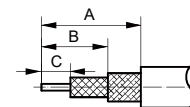
Type	A	B	C	D	E	F	Cable
N-J7Y	20	10	5	10	32.1	16	SYV-50-7-1
N-J8Y	20	10	5	10	32.1	16	SYV-50-7-2
N-J27Y	20	10	5	8.3	30.4	10.5	SYV-50-5-1
N-J28Y	20	10	5	8.3	30.4	10.5	SYV-50-5-2



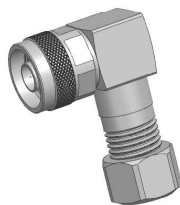
N-J301



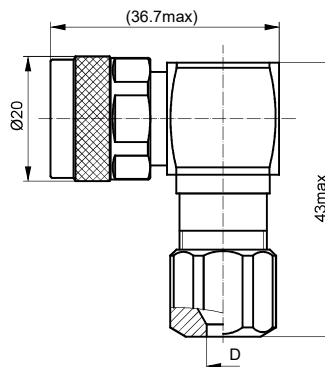
CABLE STRIPPING SIZE



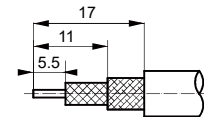
Type	D	A	B	D	Cable
N-J301	Ø5.5	14	11	8	SUJ-50-3-5
N-J302	Ø7.7	14	11	8	SUJ-50-5-5
N-J608	Ø11.2	14	11	8	SUJ-50-7-5



N-JW3



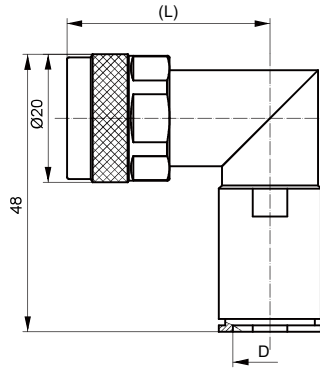
CABLE STRIPPING SIZE



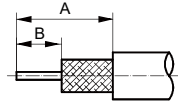
Type	D	Cable	Type	D	Cable
N-JW3	Ø3	SYV-50-2-1	N-JW12	Ø5.2	SYV-75-3
		SFF-50-1.5-1	N-JW13	Ø7.3	SYV-75-5-1/2
N-JW4A	Ø4.2	SYV-50-2-2	N-JW15	Ø10.5	SYV-75-7
		SFF-50-2-2	N-JW16	Ø12.8	SYV-75-9
N-JW5	Ø5.3	SYV-50-3	N-JW21	Ø6.5	SDY-4
N-JW7	Ø10.5	SYV-50-7-1	N-JW27	Ø7.3	SYV-50-5-1
N-JW8	Ø11.5	SYV-50-7-2	N-JW28	Ø8.2	SYV-50-5-2



N-JW5-1



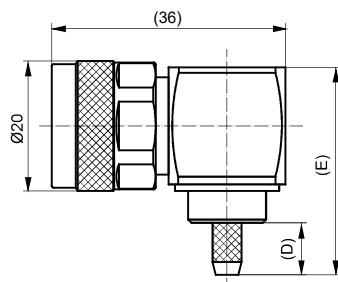
CABLE STRIPPING SIZE



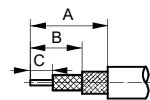
Type	D	A	B	L	Cable
N-JW5-1	Ø5.3	15	5	31.4	SYV-50-3
N-JW7-1	Ø10.5	15	5	34.8	SYV-50-7-1



N-JW4AY



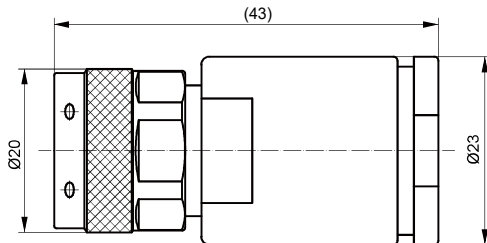
CLAMP CABLE STRIPPING SIZE



Type	A	B	C	D	E	F	Cable
N-JW4AY	20	10	5	8	31.6	10	SYV-50-2-2
							SFF-50-2-2
N-J5Y-1	20	10	5	8.3	31.9	12	SYV-50-3
N-JW27Y	20	10	5	8.3	31.9	10.5	SYV-50-5-1
N-JW28Y	20	10	5	8.3	31.9	10.5	SYV-50-5-2



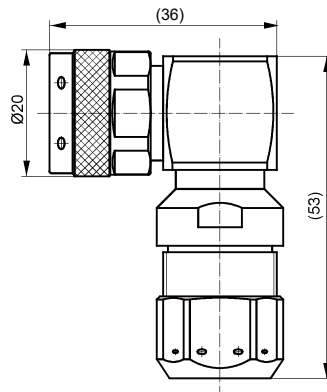
N-J10



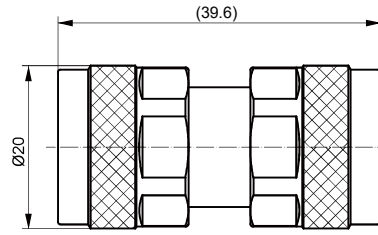
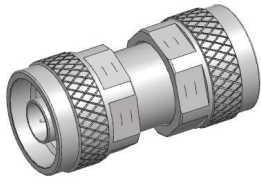
Cable:SYV-50-12



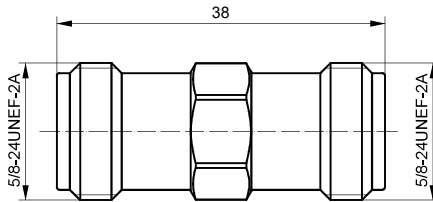
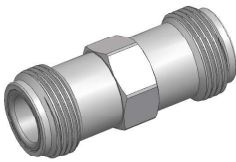
N-JW9



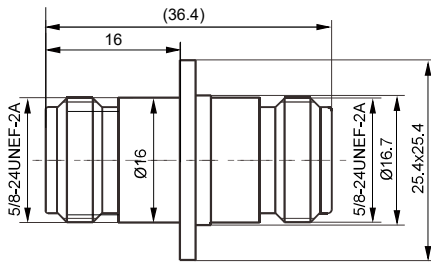
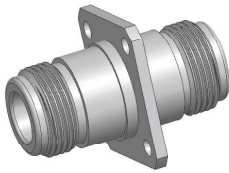
Cable:SYV-50-9



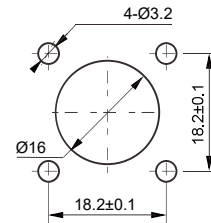
N-50JJ



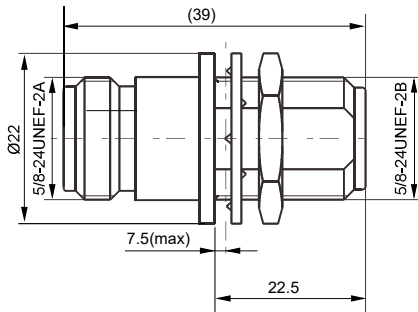
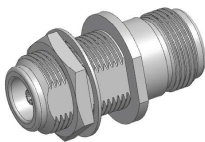
N-50KK



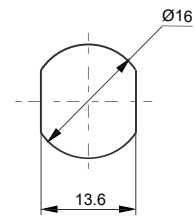
PC BOARD LAYOUT



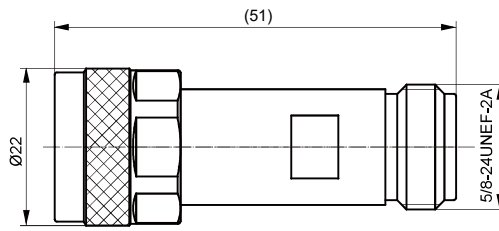
N-KFK-1



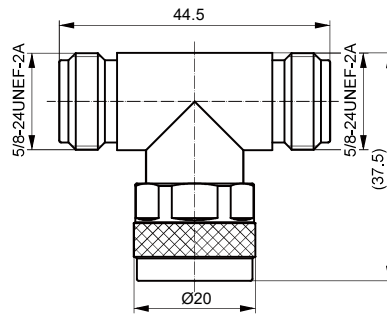
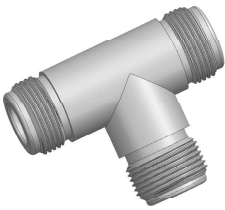
PC BOARD LAYOUT



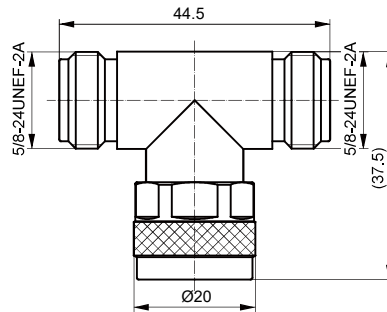
N-KYK



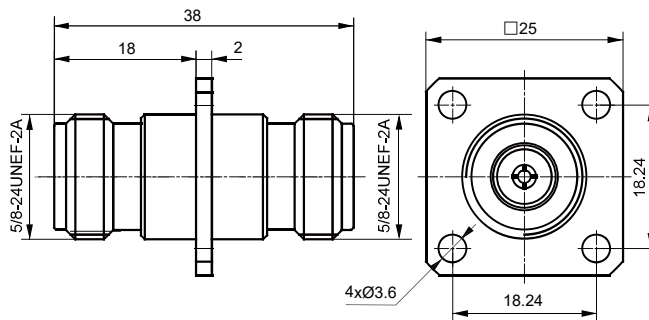
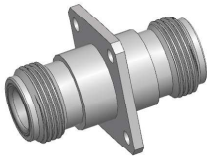
N-JK



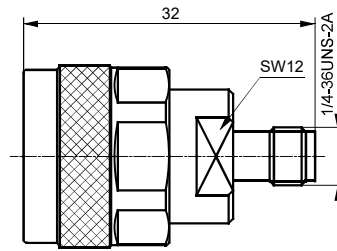
N-KKK



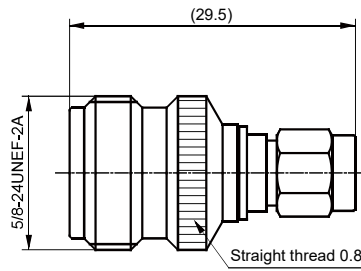
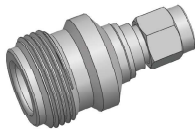
N-KJK



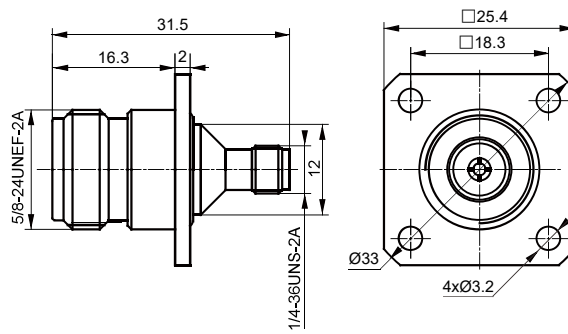
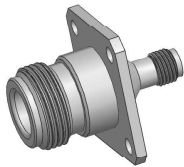
N-KFK



N-SMA-JK



N-SMA-KJ



N-SMA-KFK