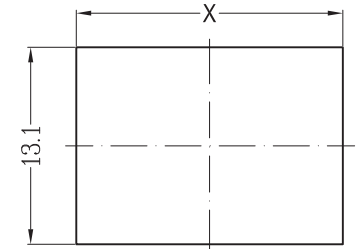


- 1、FUNCTION: ON-OFF-ON
- 2、RATING: UL: 250VAC 1/2HP 8A 250VAC 10A 125VAC
CQC: 6A/12A 250VAC
ENEC VDE: 12A 125VAC 6(4)A 250VAC μ T105
- 3、OPERATION FORCE: 650±350g.f
- 4、CONTACT RESISTANCE: ≤ 50 m Ω
- 5、INSULATION RESISTANCE: ≥ 100 M Ω
- 6、DIELECTRIC WITHSTAND:

8、SUGGESTED PANEL HOLE SIZE:

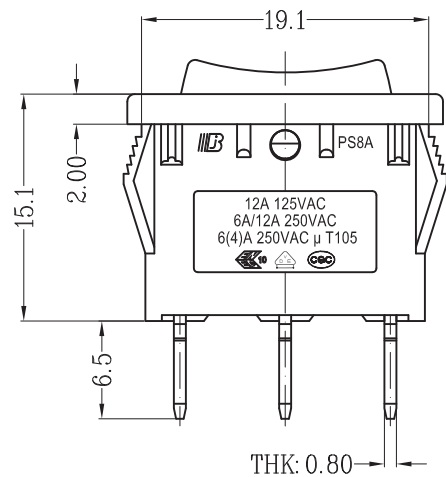
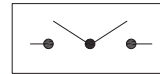
PANEL THICKNESS	DIM.X
0.75-1.25	19.2/19.1
1.25-2.0	19.4/19.3
2.0-3.0	19.8/19.7



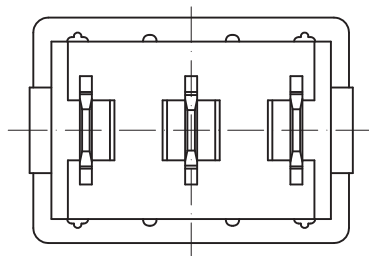
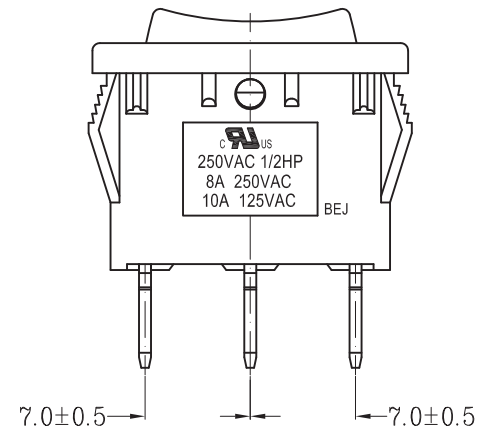
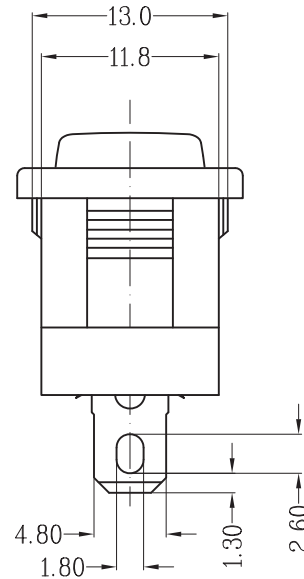
PANEL CUT-OUT

TERMINAL TO BUTTON 3000VAC/5mA/1MINTUE
TERMINAL TO TERMINAL 1500VAC/5mA/1MINTUE

7、CIRCUIT DIAGRAM:



THK: 0.80



TOLERANCE UNLESS SPECIFIED				
X: ±0.30 .XX: ±0.15 ANGULAR: ±3.0°				
PROJECTION:		V1.0		
ISSUE	DATE	DESCRIPTIONS OF REVISION		APPD.
TITLE: ROCKER SWITCH		UNIT: mm	SCALE: NOT SCALE	DRWG NO.: BEJ-FH-W0598
MODEL: PS8A-13-B1B1-3H-02		FUNCTION: ON-OFF-ON		DWN. 黄荟荟 2016-06-16
东莞市涪程电子科技有限公司		CHK'D. 冯辉 2016-06-16		APPD. 谭云锋 2016-06-16