

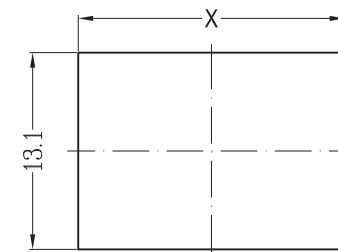
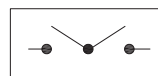
- 1、FUNCTION: ON-OFF-ON
- 2、RATING: UL: 250VAC 1/2HP 8A 250VAC 10A 125VAC
CQC: 6A/12A 250VAC
ENEC VDE: 12A 125VAC 6(4)A 250VAC μ T105
- 3、OPERATION FORCE: 650±350g.f
- 4、CONTACT RESISTANCE: \leq 50 m Ω
- 5、INSULATION RESISTANCE: \geq 100 M Ω
- 6、DIELECTRIC WITHSTAND:

8、SUGGESTED PANEL HOLE SIZE:

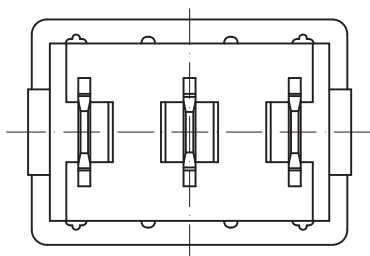
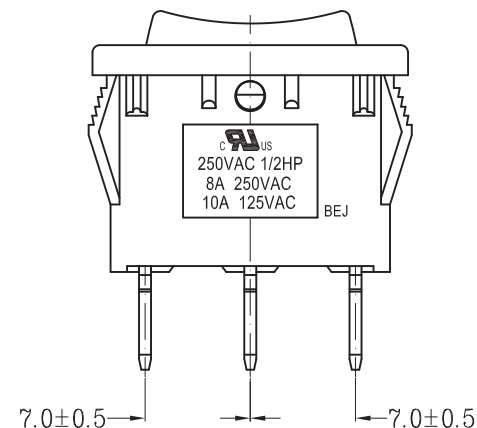
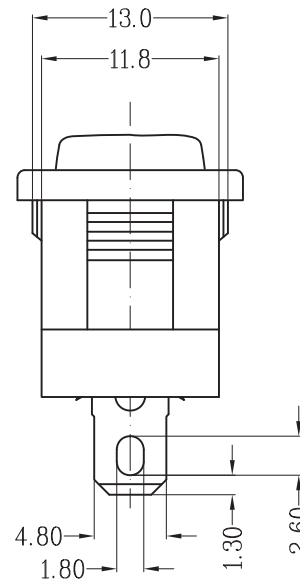
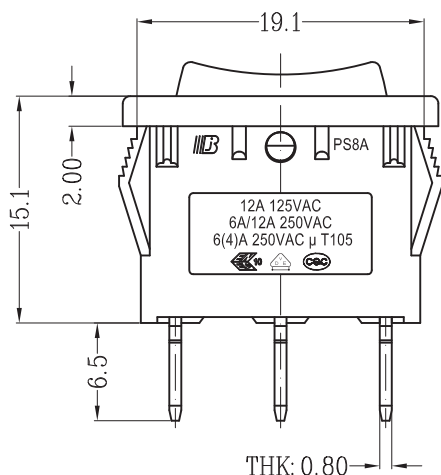
PANEL THICKNESS	DIM.X
0.75-1.25	19.2/19.1
1.25-2.0	19.4/19.3
2.0-3.0	19.8/19.7

TERMINAL TO BUTTON 3000VAC/5mA/1MINTUE
TERMINAL TO TERMINAL 1500VAC/5mA/1MINTUE

7、CIRCUIT DIAGRAM:



PANEL CUT-OUT



TOLERANCE UNLESS SPECIFIED				
.X: ±0.30 : ±0.15 ANGULAR: ±3.0°				
PROJECTION:		V1.0		
ISSUE	DATE	DESCRIPTIONS OF REVISION		APPD.
TITLE: ROCKER SWITCH		UNIT: mm	SCALE: NOT SCALE	DRWG NO.: BEJ-FH-W0718
MODEL: PS8A-13-B1B6-3H15-02		FUNCTION: ON-OFF-ON		DWN. 黄芸芸 2017-02-16
东莞市涪程电子科技有限公司		CHK'D. 冯辉 2017-02-16		
		APPD. 谭云峰 2017-02-16		