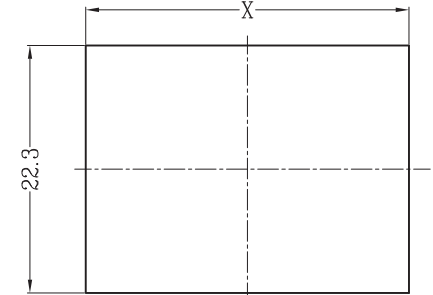
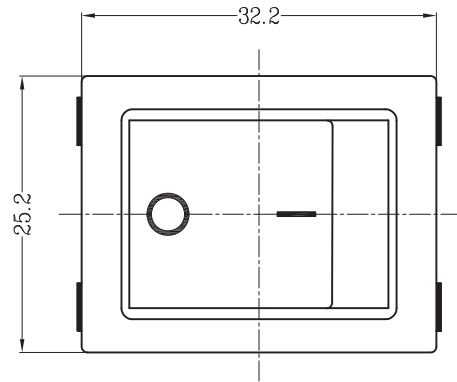


1. FUNCTION: OFF-ON
OFF-ON
2. RATING: UL: 16A 250VAC 1/4HP 20A 125VAC 1/4HP 250VAC 3/4HP
ENEC VDE/CQC: 16(4)A 250VAC T105
3. OPERATION FORCE: 650±350g.f
4. CONTACT RESISTANCE: ≤ 50 mΩ
5. INSULATION RESISTANCE: ≥ 100 MΩ
6. DIELECTRIC WITHSTAND : TERMINAL TO BUTTON 3000VAC/5mA/1MIN
TERMINAL TO TERMINAL 1500VAC/5mA/1MIN

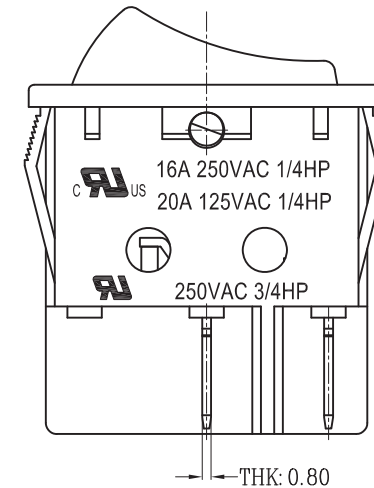
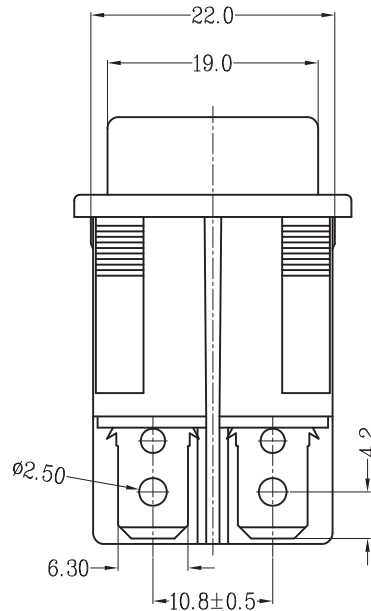
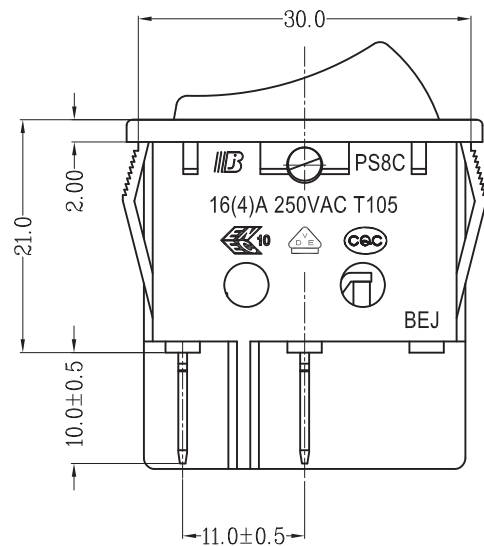
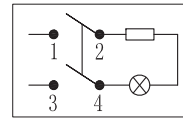
8. SUGGESTED PANEL HOLE SIZE:

PANEL THICKNESS	DIM.X
0.75~1.25	30.1/30.0
1.25~2.0	30.3/30.2
2.0~3.0	30.6/30.5



PANEL CUT-OUT

7. CIRCUIT DIAGRAM:



TOLERANCE UNLESS SPECIFIED					
.X ±0.30 .XX ±0.15 ANGULAR: ±3.0°					
PROJECTION		V2.0			
ISSUE	DATE	DESCRIPTIONS OF REVISION			APPD.
TITLE: ROCKER SWITCH		UNIT: mm	SCALE: NOT SCALE	DRWG NO.: BEJ-FH-W0722	
MODEL: PS8C-5-B1G3-6H15-10(A10979)		FUNCTION: OFF-ON OFF-ON		DWN.	吴为萍 2017-11-15
东莞市涪程电子科技有限公司				CHK'D.	冯辉 2017-11-15
				APPD.	谭云锋 2017-11-15