

1. FUNCTION: OFF-ON
OFF-ON

2. RATING: UL: 16A 250VAC 1/4HP 20A 125VAC 1/4HP 250VAC 3/4HP
ENEC VDE/CQC: 16(4)A 250VAC T105

3. OPERATION FORCE: 650±350gf

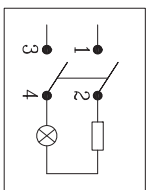
4. CONTACT RESISTANCE: mΩ

5. INSULATION RESISTANCE: MΩ

6. DIELECTRIC WITHSTANDING VOLTAGE: 3000VAC/5mA/MINUTE

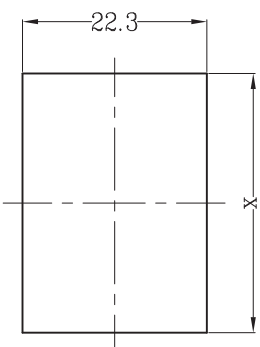
TERMINAL TO TERMINAL 1500VAC/5mA/MINUTE

7. CIRCUIT DIAGRAM:



8. SUGGESTED PANEL HOLE SIZE:

PANEL THICKNESS	DIM. X
0.75~1.25	30.1/30.0
1.25~2.0	30.3/30.2
2.0~3.0	30.6/30.5



PANEL CUT-OUT

TOLERANCE UNLESS SPECIFIED		DESCRIPTIONS OF REVISION	
.X:±0.30	.XX:±0.15	ANGULAR:±9.0°	
PROJECTION:		ISSUE	DATE
TITLE: ROCKER SWITCH	UNIT: mm	SCALE: NOT SCALE	DRWG NO.: BEJ-FH-W0096
MODEL: PS8C-5-BIR3-6H-10(A22269)		FUNCTION: OFF-ON	DWN: 黎杰
			CHK'D: 冯辉
			APPD: 谭云峰
V4.0		APPD.	