

SPEC:

A. Material:

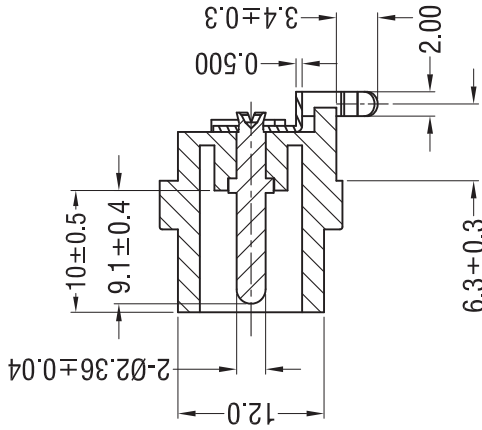
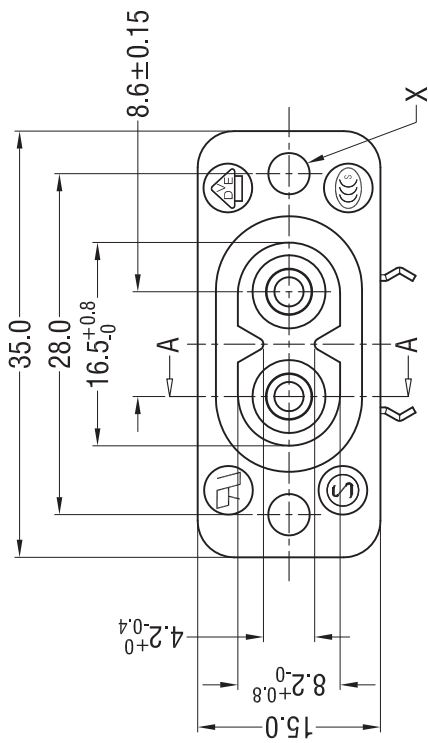
- 1. Housing: PBT
- 2. Terminal: COPPER ALLOY, TIN&NI PLATED

B. Electrical Characteristics:

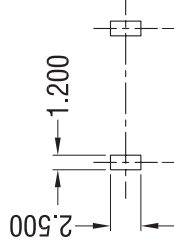
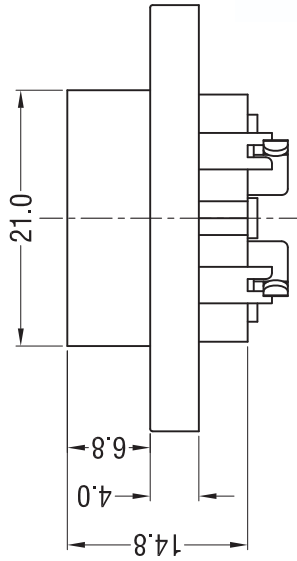
- 1. Rating: 2.5A 250V ~ (UL,CUL,CCC,VDE,DEMKO,NEMKO,SEMKO,FIMKO)
- 2. Electric Strength: AC 2,000 V FOR ONE MINUTE
- 3. Insulation Resistance: 100MΩ MIN, AT 500V DC

C. Approvals:

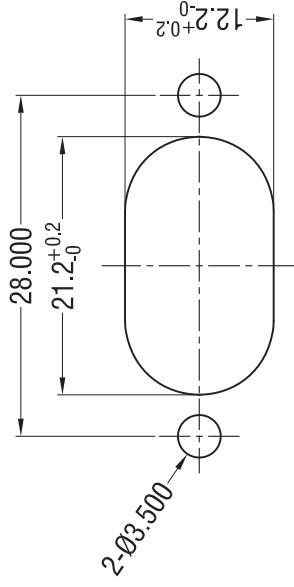
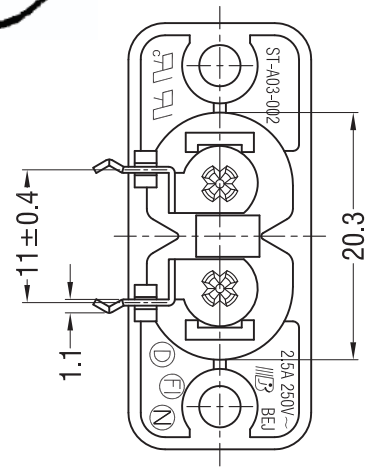
UL, CUL, CCC, VDE, DEMKO, NEMKO, SEMKO, FIMKO



SECTION A-A



PCB LAYOUT



PANEL CUT-OUT

PART NO.:	DIM. X
ST-A03-002MT14(2.5)	Ø2.5
ST-A03-002MT14(3.4)	Ø3.4

V1.4		ECN NO.
V1.3		
V1.2		
V1.1		
V1.0	2012.05.19	New Revision
REV	DATE	DESCRIPTION

Common Tolerance	
DIMENSION:	ANGLE:
0.0 ±0.3	±3°
0.00 ±0.20	
0.000 ±0.100	
VIEW:	
UNIT:	mm

Drawing For Customer	
DESIGNER	CHECKED
Shirley	Toby
Buddy	
Part No.:	
SEE ABOVE	
File No.:	
BEJ-E-EK-A03-0044	

东莞市涪程电子科技有限公司

Name: AC INLET 2PIN SOCKET
Model No.: ST-A03-002