

TNC series

RF Coaxial Connector

FEATURES

- Developed according to the US military standard MIL-C-39012, A Small and Medium Power RF Connector with a Threaded Connection Mechanism
- Strong vibration resistance, high reliability, and superior electrical and mechanical performance
- Can be compatible with international TNC series connector products
- Widely used for the transmission of radio frequency signals in radio equipment and instruments

TECHNICAL PARAMETER

Temperature: : - 65~+165°C

Impedance: 50Ω

Frequency: DC~11GHz

VSWR: ≤1.30(直式)

Insulation resistance: ≥5000MΩ

Dielectric strength: 1500V(rms)

Operating Voltage: 500V(rms)

Contact resistance: Center contact: ≤2mΩ;

Outer contact: ≤0.2mΩ

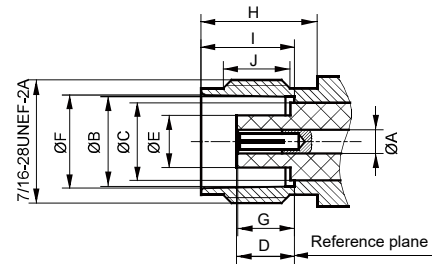
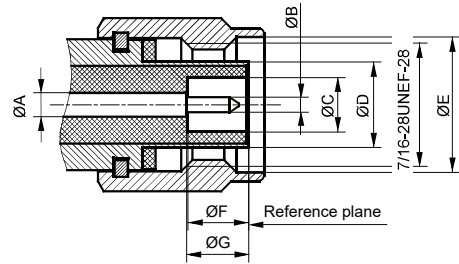
Mechanical endurance: 500 OPS

IMPLEMENTATION CRITERIA

IEC 60169-17 GB/T 11313.1



INTERFACE DIMENSIONS

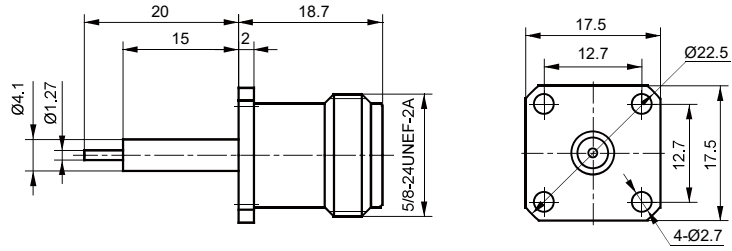


Male connector

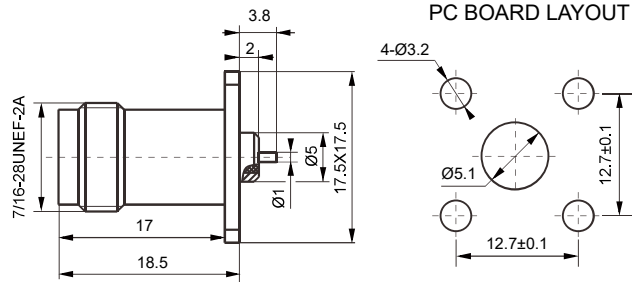
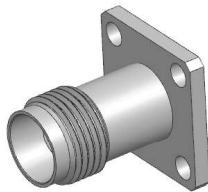
	Min(mm)	Max(mm)
A	2.14 Nominal value	
B	1.32	1.37
C	4.83	/
D	/	8.18
E	11.18	/
F	5.28	5.79
G	5.33	5.84

Female connector

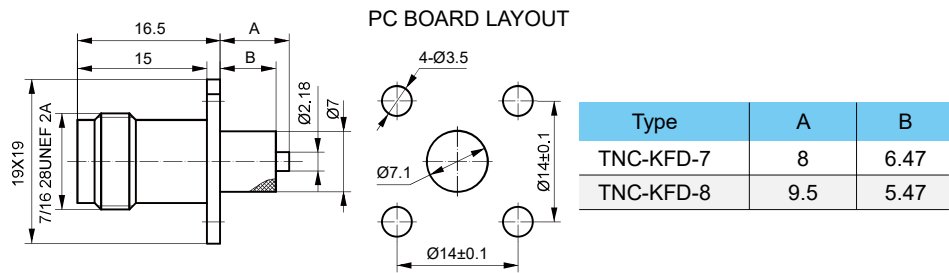
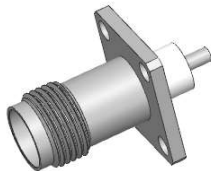
	Min(mm)	Max(mm)
A	2.14 Nominal value	
B	8.10	8.15
C	/	6.50
D	4.78	5.28
E	/	4.72
F	8.31	8.46
G	4.72	5.23
H	10.52	/
I	8.31	8.51
J	10.52	/



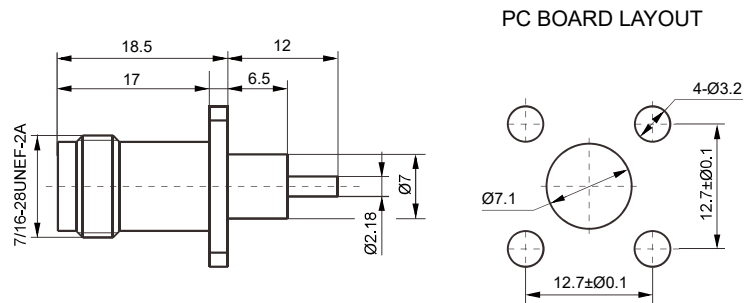
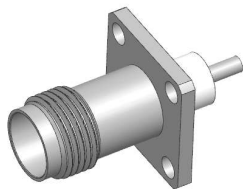
TNC-KFDG



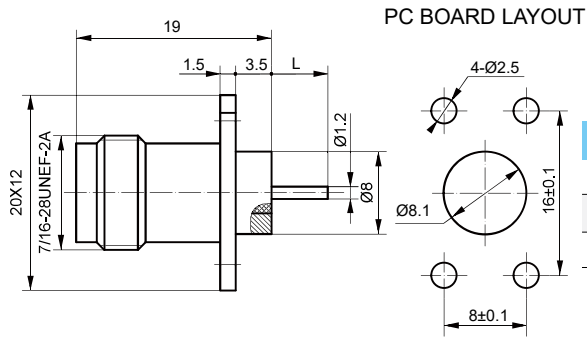
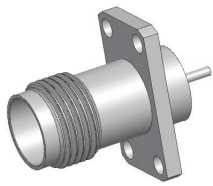
TNC-KFD-5



TNC-KFD-7

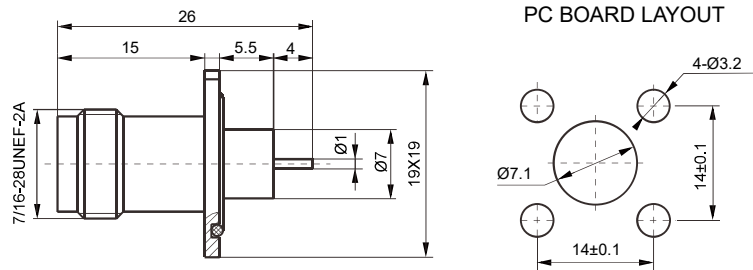
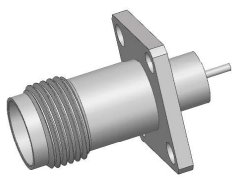


TNC-KFD-10

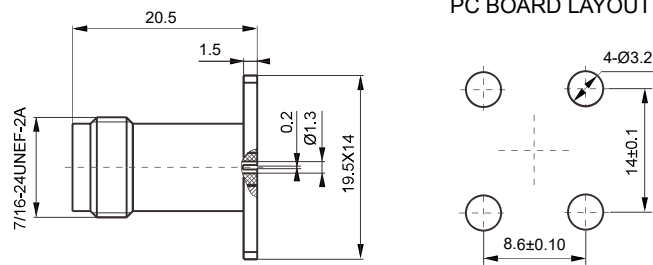
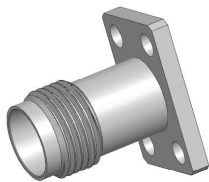


Type	L
TNC-KFD-12	2
TNC-KFD-13	9
TNC-KFD-14	5

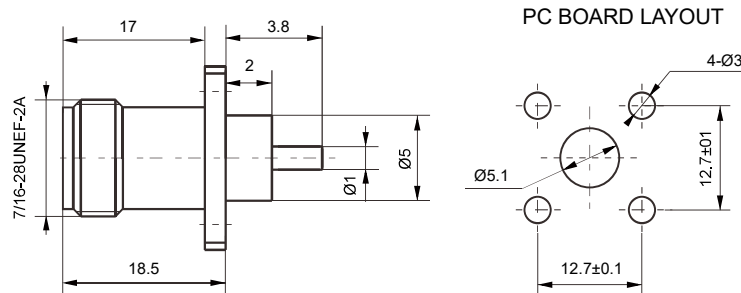
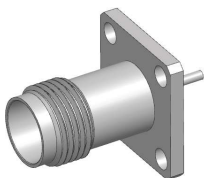
TNC-KFD-12



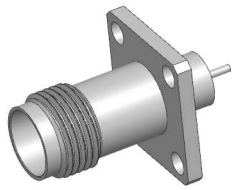
TNC-KFD-15



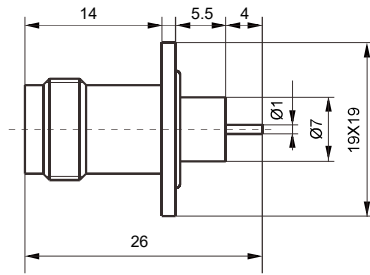
TNC-KFD-18



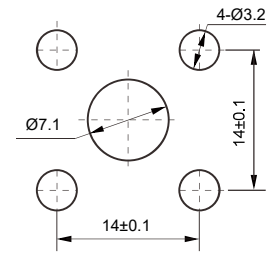
TNC-KFD-22



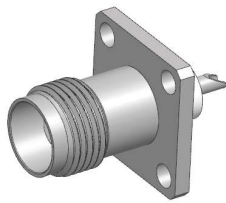
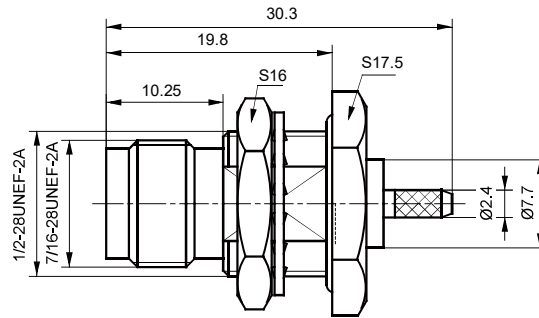
TNC-KFD-21



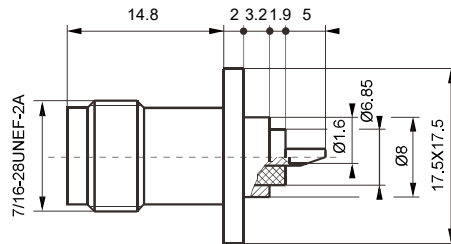
PC BOARD LAYOUT



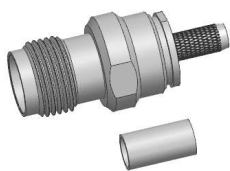
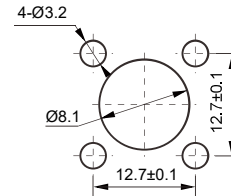
TNC-KY3Y



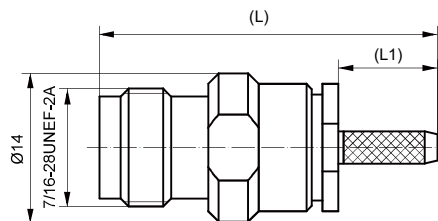
TNC-KF



PC BOARD LAYOUT

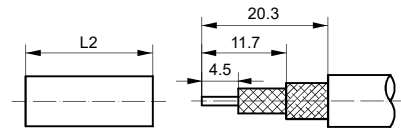


TNC-K4AY

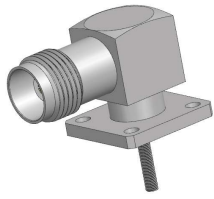


CLAMP

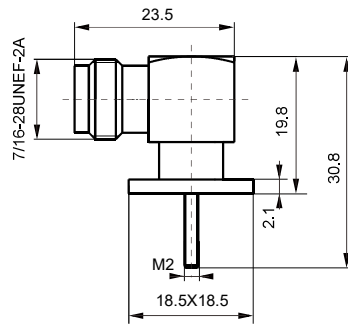
CABLE STRIPPING SIZE



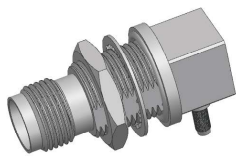
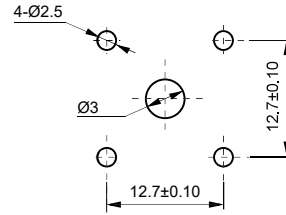
Type	L	L1	L2	Cable
TNC-K4AY	32	8.3	10	SFF-50-2-2
				SYV-50-2-2
TNC-K5Y	32	8.3	9.7	SFF-50-3-1
				SYV-50-3



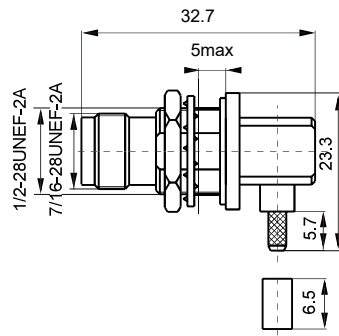
TNC-KWFD



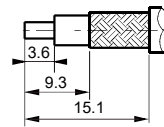
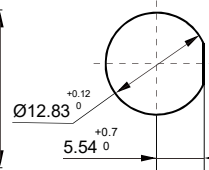
PC BOARD LAYOUT



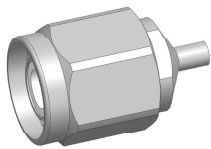
TNC-KYW3Y



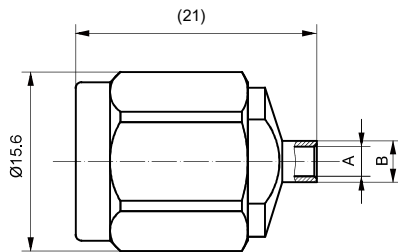
PC BOARD LAYOUT CABLE STRIPPING SIZE



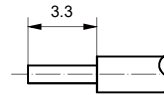
Type	Cable
TNC-KYW3Y	SFF-50-1.5-1
	SYV-50-2-1



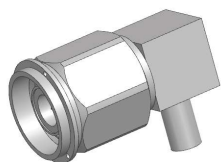
TNC-JB2



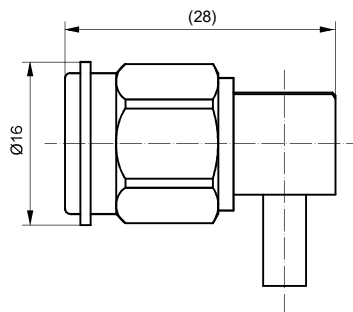
CABLE STRIPPING SIZE



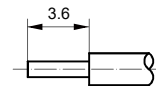
Type	A	B	Cable
TNC-JB2	Ø2.2	Ø3.0	SFT-50-2-1
TNC-JB3-1	Ø3.6	Ø4.6	SFT-50-3-1



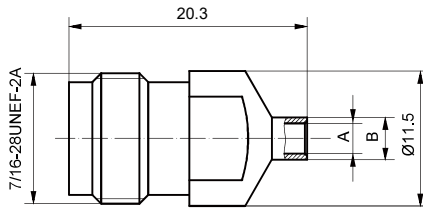
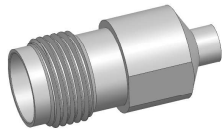
TNC-JWB3



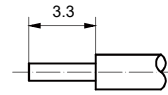
CABLE STRIPPING SIZE



Type	Cable
TNC-JWB3	SFT-50-3-1

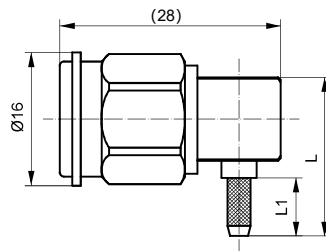
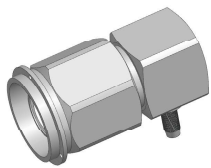


CABLE STRIPPING SIZE

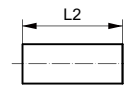


Type	A	B	Cable
TNC-KB2	Ø2.2	Ø3.0	SFT-50-2-1
TNC-KB3	Ø3.6	Ø4.6	SFT-50-3-1

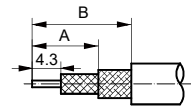
TNC-KB2



CLAMP

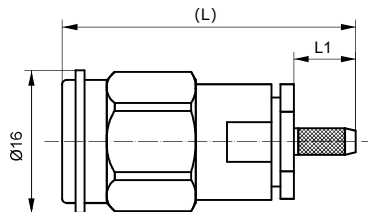
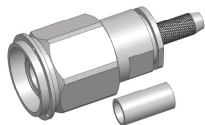


CABLE STRIPPING SIZE

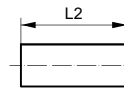


Type	L	L1	L2	A	B	Cable
TNC-JW3Y	23.1	5.7	6.5	6.3	16.3	SFF-50-1.5-1 SYV-50-2-1
TNC-JW4AY	24.8	8.3	10	5.4	18	SFF-50-2-2 SYV-50-2-2
TNC-JW5Y	24.8	8.3	12	5.4	18	SFF-50-3-1 SYV-50-3
TNC-JW6Y	23.3	8.3	13.5	5.4	18	SFF-50-5

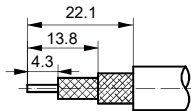
TNC-JW3Y



CLAMP

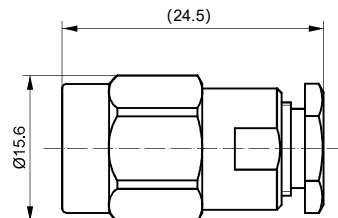
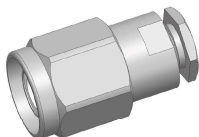


CABLE STRIPPING SIZE

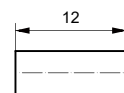


Type	L	L1	L2	Cable
TNC-J4AY	32.9	8	10	SFF-50-2-2 SYV-50-2-2
TNC-J5Y	33.5	8.3	9.7	SYV-50-3

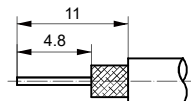
TNC-J4AY



CLAMP

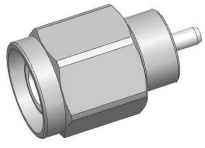


CABLE STRIPPING SIZE

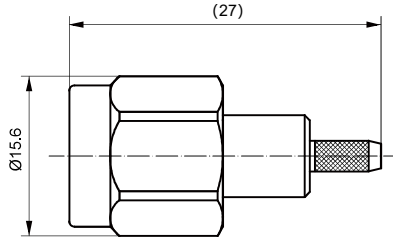


Type	Cable
TNC-J5-3	SUV-50-3-5

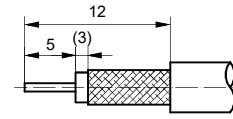
TNC-J5-3



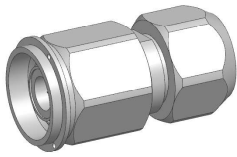
TNC-J3Y-1



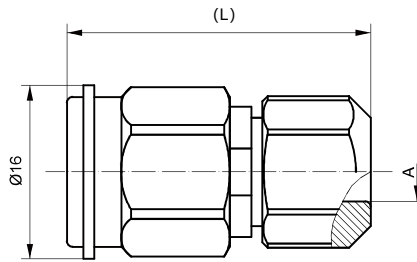
CABLE STRIPPING SIZE



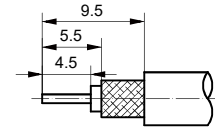
Type	Cable
TNC-J3Y-1	SYV-50-2-1
	SFF-50-1.5-1



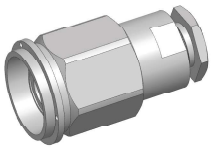
TNC-J4A



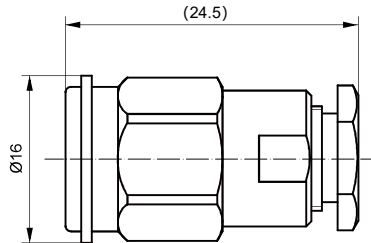
CABLE STRIPPING SIZE



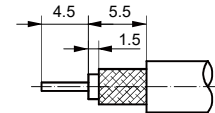
Type	A	L	Cable
TNC-J4A	Ø4.2	30	SFF-50-2-2
			SYV-50-2-2
TNC-J5	Ø5.2	30	SFF-50-3-1
			SYV-50-3
TNC-J3-1	Ø3	24.7	SFF-50-1.5-1
			SYV-50-2-1



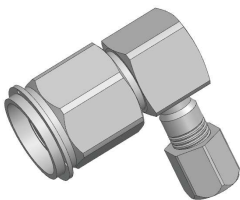
TNC-J5-1



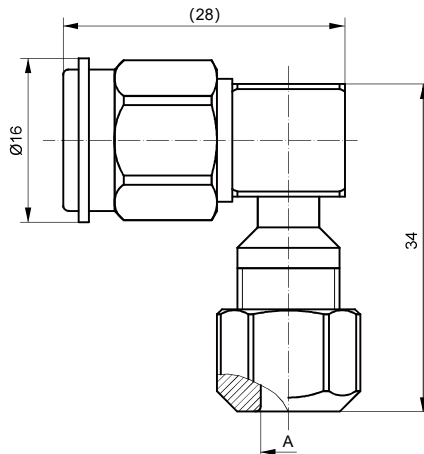
CABLE STRIPPING SIZE



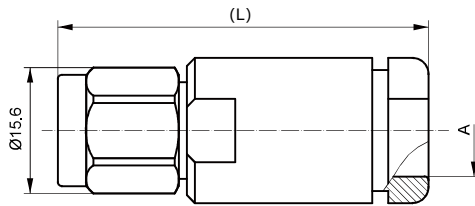
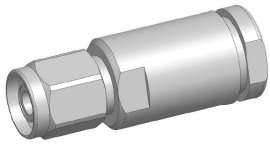
Type	Cable
TNC-J5-1	SYV-50-3-5



TNC-JW3

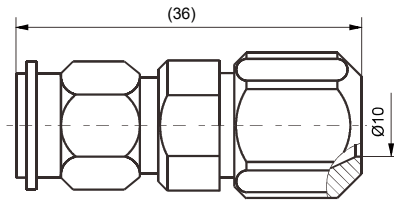
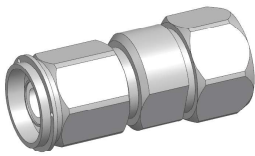


Type	A	Cable
TNC-JW3	Ø3	SFF-50-1.5-1
		SYV-50-2-1
TNC-JW4A	Ø4.2	SFF-50-2-2
		SYV-50-2-2
TNC-JW5	Ø5.2	SFF-50-3-1
		SYV-50-3



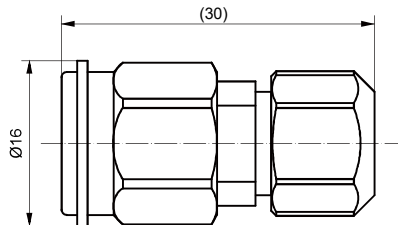
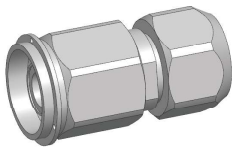
Type	A	L	Cable
TNC-J7	Ø10.5	45	SYV-50-7-1
TNC-J8	Ø11.5	45	SYV-50-7-2
TNC-J27	Ø7.4	47	SYV-50-5-1

TNC-J7



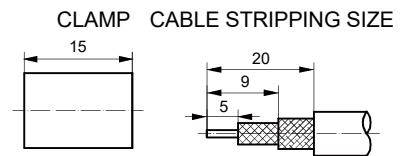
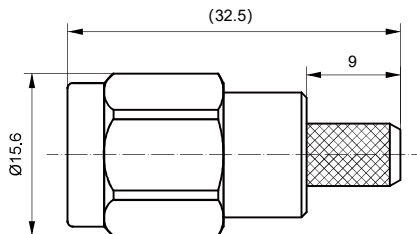
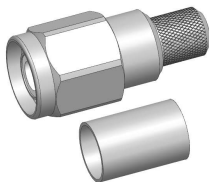
Type	Cable
TNC-J6A	SYV-50-5

TNC-J6A



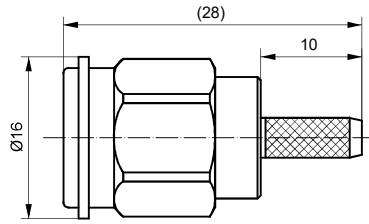
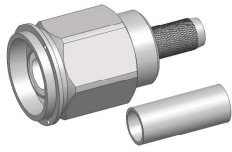
Type	Cable
TNC-J301	SUJ-50-3-5

TNC-J301



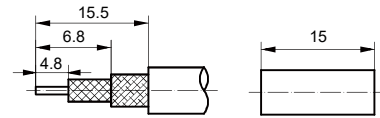
Type	Cable
TNC-J601Y	LMR-400

TNC-J601Y



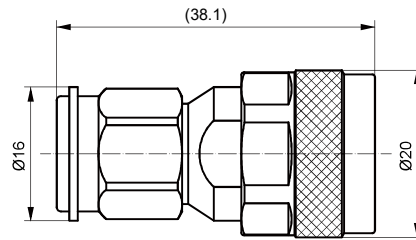
CABLE STRIPPING SIZE

CLAMP

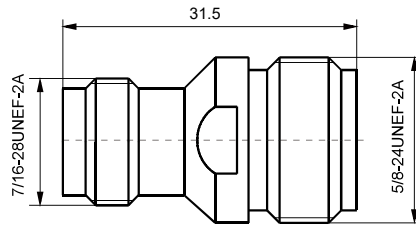
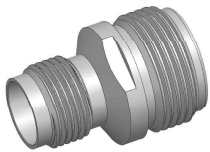


Type	Cable
TNC-J7AY	SFCF-50-5-5

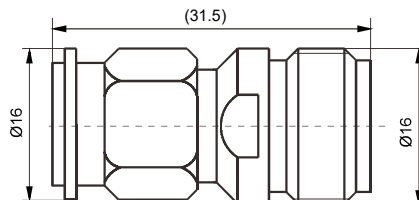
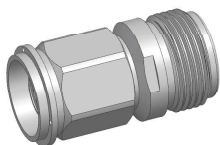
TNC-J7AY



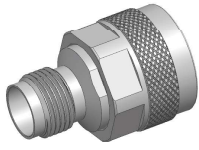
N/TNC-JJ



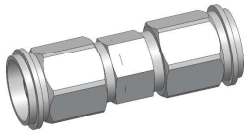
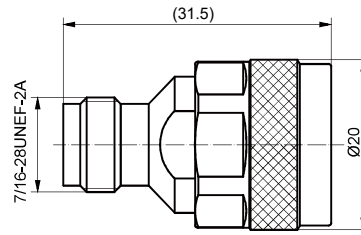
N/TNC-KK



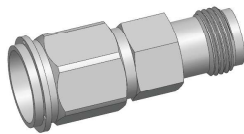
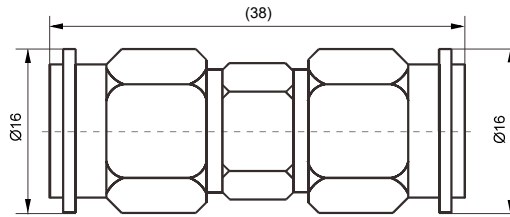
N/TNC-KJ



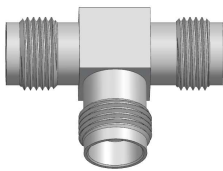
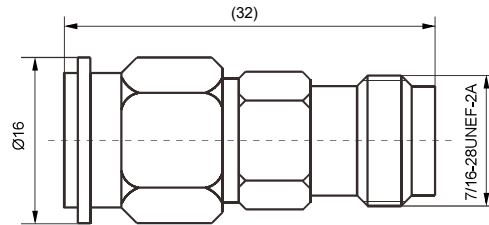
N/TNC-JK



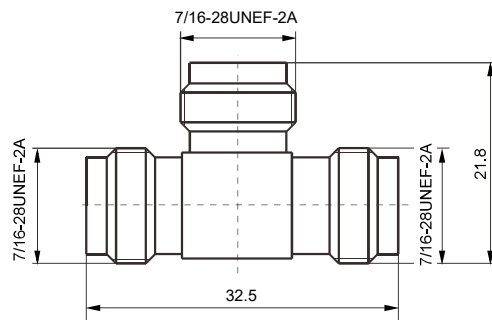
TNC-JJ

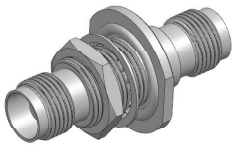


TNC-JK

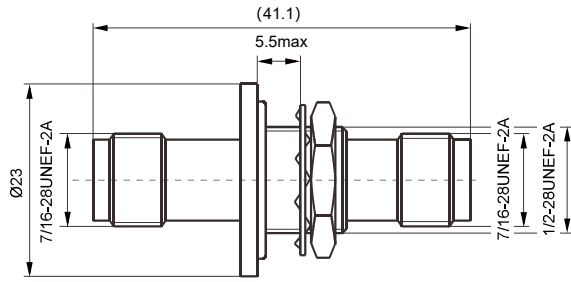


TNC-KKK

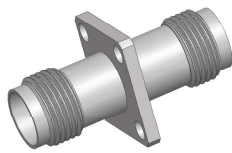
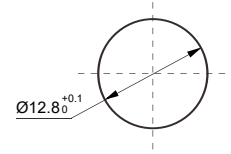




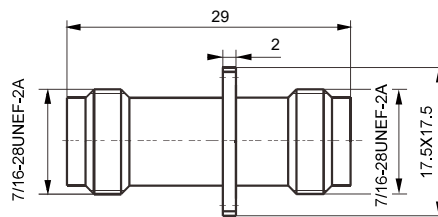
TNC-KYK



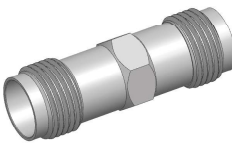
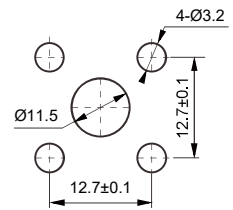
PC BOARD LAYOUT



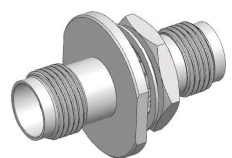
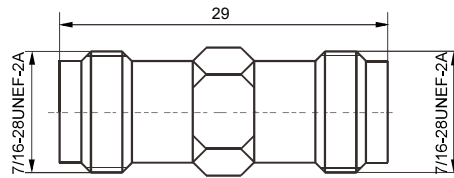
TNC-KFK



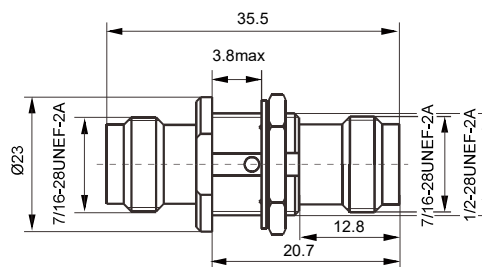
PC BOARD LAYOUT



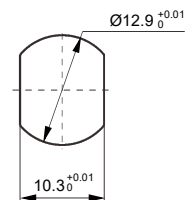
TNC-KK

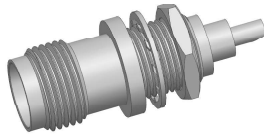


TNC-KYK-1

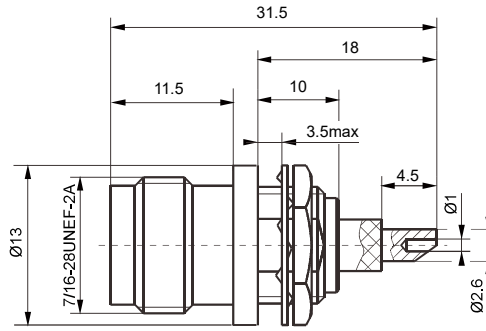


PC BOARD LAYOUT





TNC-KY-1



PC BOARD LAYOUT

